

North Carolina Fence Design and Implementation Requirements (IR)

Installation Instructions

(IR Version: January 2020) (Installation Instructions Version: Feb 2021)



The **NC Fence(NC382) IR** is a MS ACCESS application housed on a public Google Drive, that must be deployed to the user's computer to enable its functionalities. Access 2013 or higher is a required Microsoft Office component that must be loaded on the user's computer for **NC Fence (NC382) IR** to function. Select the appropriate file based on your computer's Microsoft Office bit-version (i.e. 32-bit or 64-bit) AND follow all outlined steps in this document to set up the **NC Fence (NC382) IR** in your computer.

1. Important – please delete the 'NC Fence IR' shortcut on your desktop and sign-out of Gmail (if applicable).
2. Open the appropriate link provided below based on your computer's Microsoft Office bit-version (*To find your computer's Microsoft Office bit-version, click [HERE](#) for instructions.*)

[Fence\(NC382\)IR_Jan2020-32-bit.zip](#) OR [Fence\(NC382\)IR_Jan2020-64-bit.zip](#)

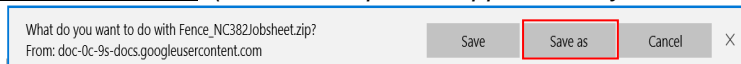
3. Click on the Download symbol.



4. After new window opens, click on Download anyway.

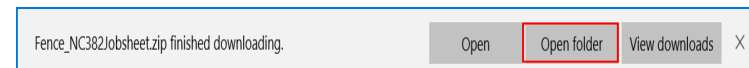
Download anyway

5. A message will prompt you to Save, Save as or Cancel. Select Save As. (Note- The zip file is approximately 722 MB in size, and depending on your internet speed, it may take approximately 15-30 min. to download)



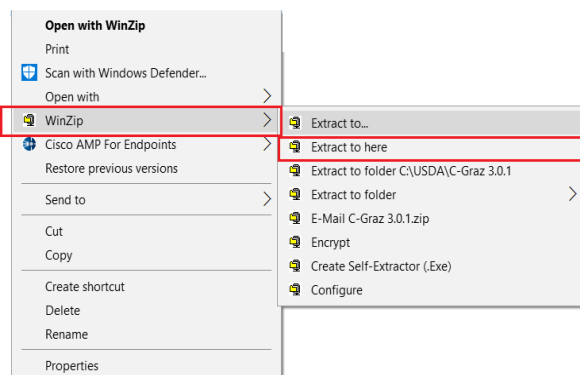
6. A small window will automatically open and prompt you to select the location where the zip file will be saved. Select the C:\USDA folder as your default location (For Non-USDA computers, create a "USDA" folder in the C: drive)

7. Once the zip file has downloaded, a small message will appear at the bottom of your web browser. Select Open Folder.



8. After default folder opens (C:\USDA), right click on the Fence NC_FencIR zip file. Then select WinZip>Extract to here.

9. After successful extraction, the unzipped Fence(NC382)IR_Jan2020 folder will appear in its default location ([C:\USDA\Fence\(NC382\)IR_Jan2020](#)).



10. Check/set Trust Center Settings (refer to page 2).

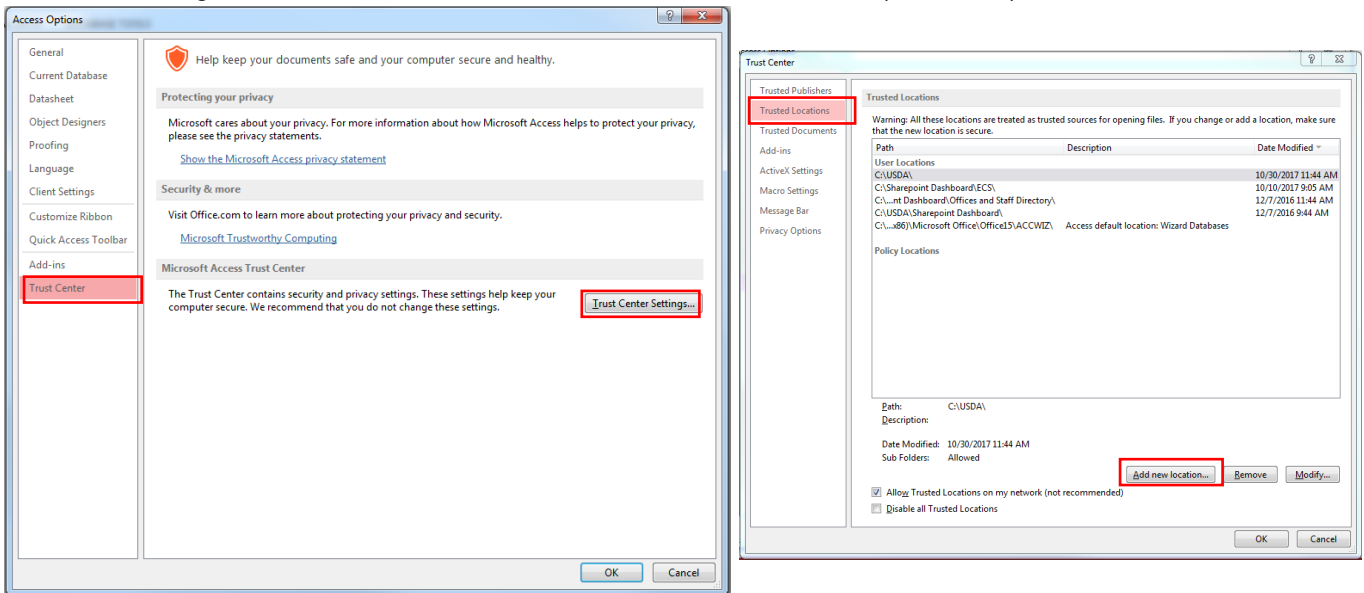
11. Now navigate to the default folder ([C:\USDA\Fence\(NC382\)IR_Jan2020](#)) and double click on the **Fence(NC382)IR_Jan2020.accde** file to start the job sheet. (*Note- If presented with security warning issues when attempting to start the application, please follow the instructions on page 2*).

12. Once opened, be sure to click 'Put NC Fence Shortcut on My Desktop'.

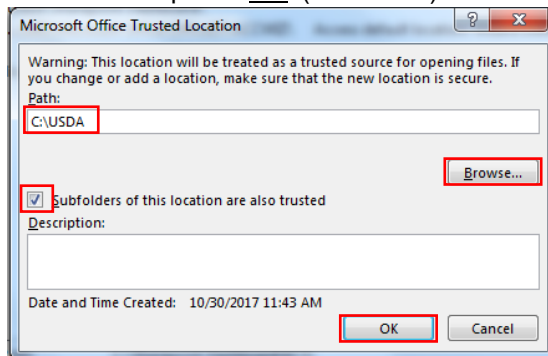
Put NC Fence Shortcut on MY Desktop

If you have problems running the Fence IR due to security warning issues, try the following:

1. Start MS Access 2013 standalone: Start > All Programs > Microsoft Office 2013> Access 2013.
2. Click on 'Open Other Files' at the bottom left of the Access Screen.
3. Click on 'Options' at bottom left > Choose 'Trust Center' from list at left > Click on the 'Trust Center Settings' button on the right of screen > Choose 'Trusted Locations' from list at left (see below).



4. Click on 'Add New Location' button and 'Browse' to C:\USDA. Check 'Subfolders of this location are also trusted' and press 'OK' (see below).



5. Press 'OK' at bottom right on the Trust Center screen.
6. Press 'OK' at bottom right on the Access Options screen.
7. The Fence IR should now function without security related issues.

For deployment, installation, or troubleshooting support, please contact robert.horton@usda.gov or State Resource Conservationist

The United States Department of Agriculture (USDA) prohibits discrimination in its programs on the basis of race, color, national origin, sex, religion, age, disability, political beliefs, and marital or familial status. (Not all prohibited bases apply to all programs.) Persons with disabilities who require alternative means for communication of program information (Braille, large print, audiotape, etc.) should contact USDA's TARGET Center at (202) 720-2600 (voice and TDD). To file a complaint, write the Secretary of Agriculture, U.S. Department of Agriculture, Washington, DC 20250, or call 1-800-245-6340 (voice) or (202) 720-1127 (TDD). USDA is an equal employment opportunity employer. To file a complaint of discrimination write USDA, Director, Office of Civil Rights, Room 326-W, Whitten Building, 14th and Independence Avenue, SW, Washington, DC 20250-9410 or call (202) 720-5964 (voice or TDD). USDA is an equal opportunity provider and employer.