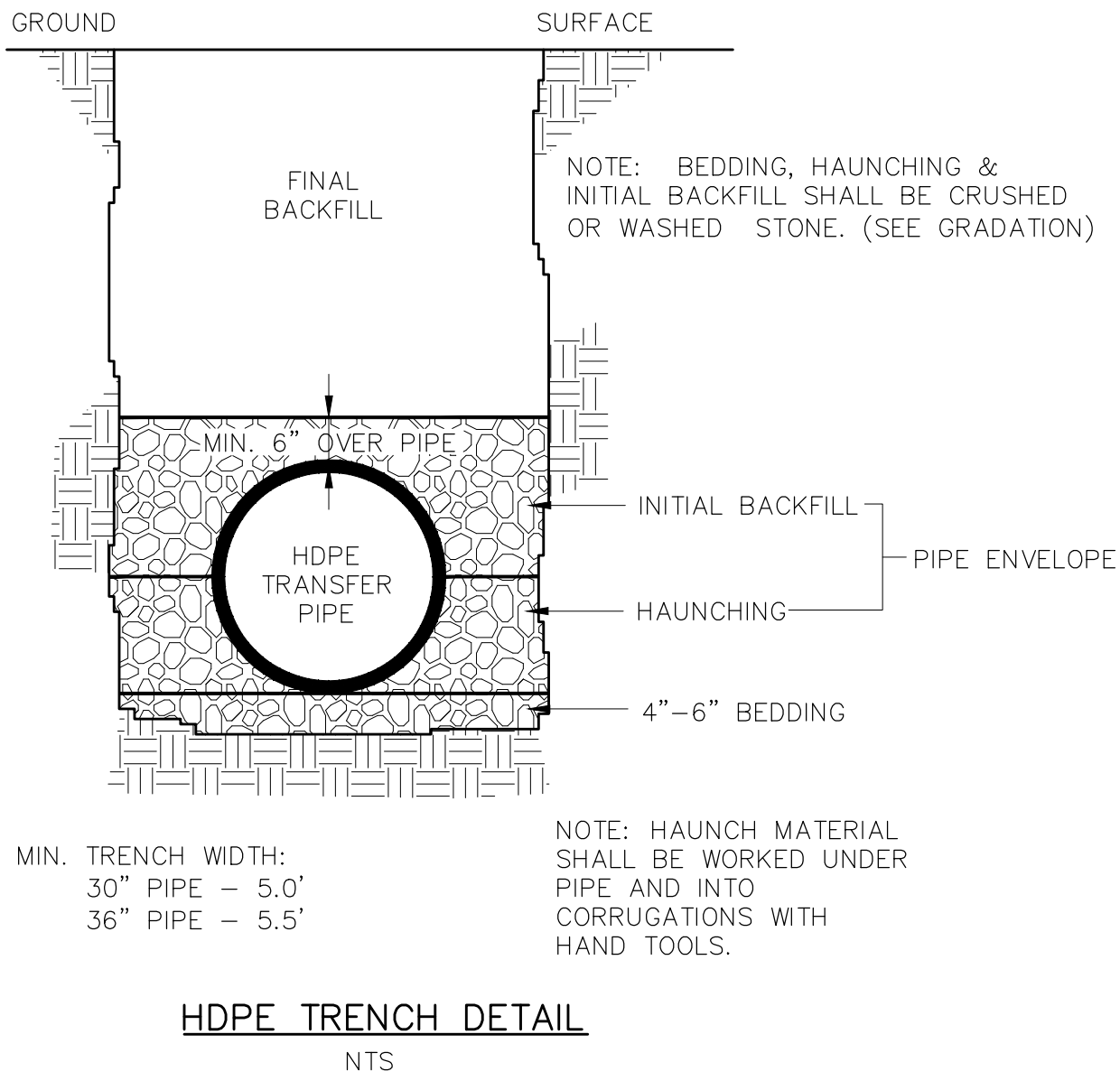
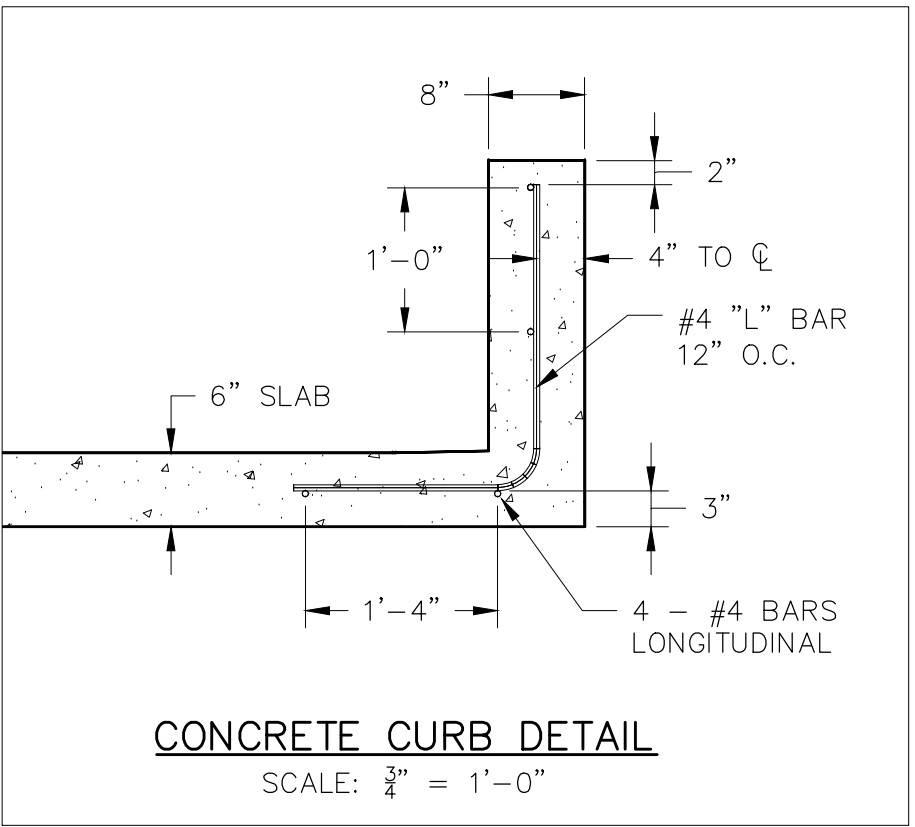
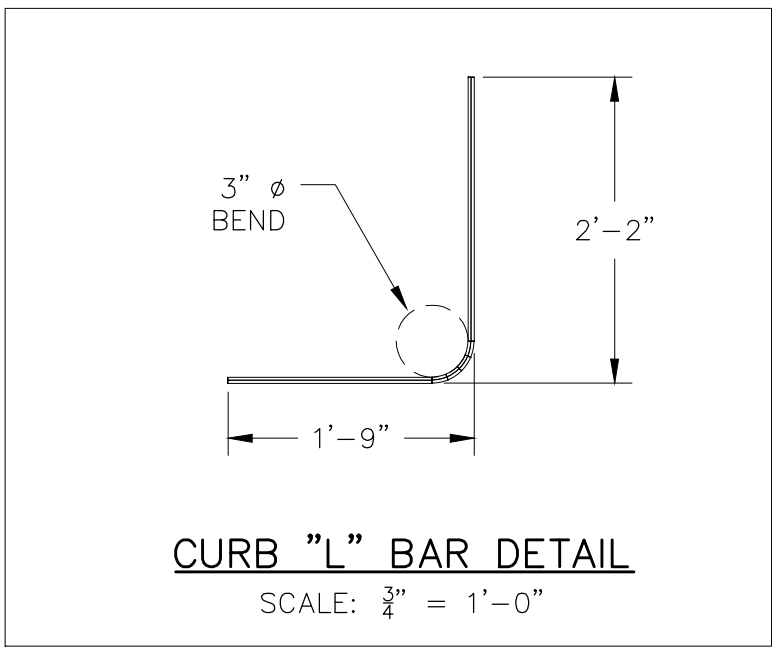
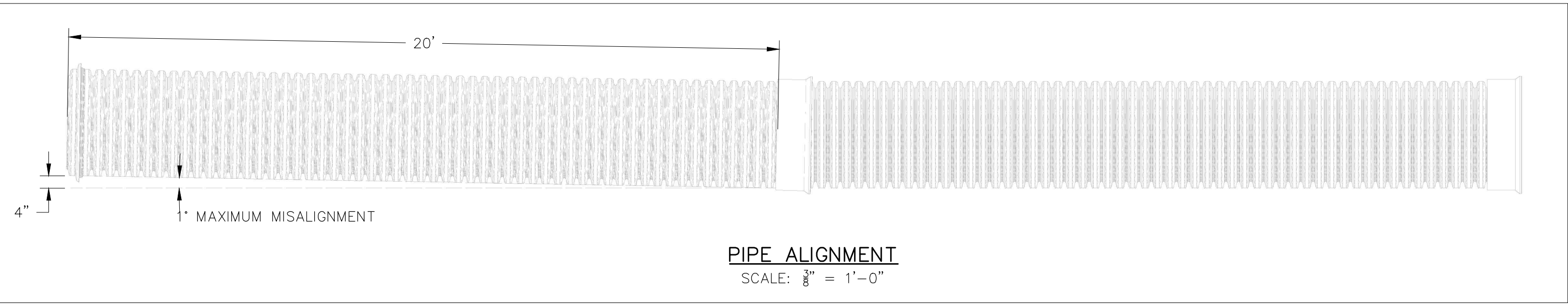
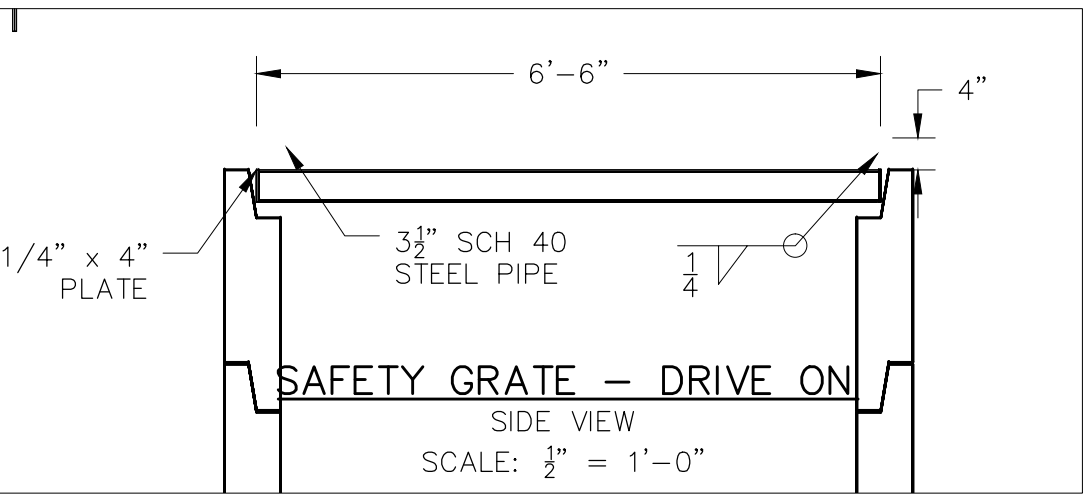
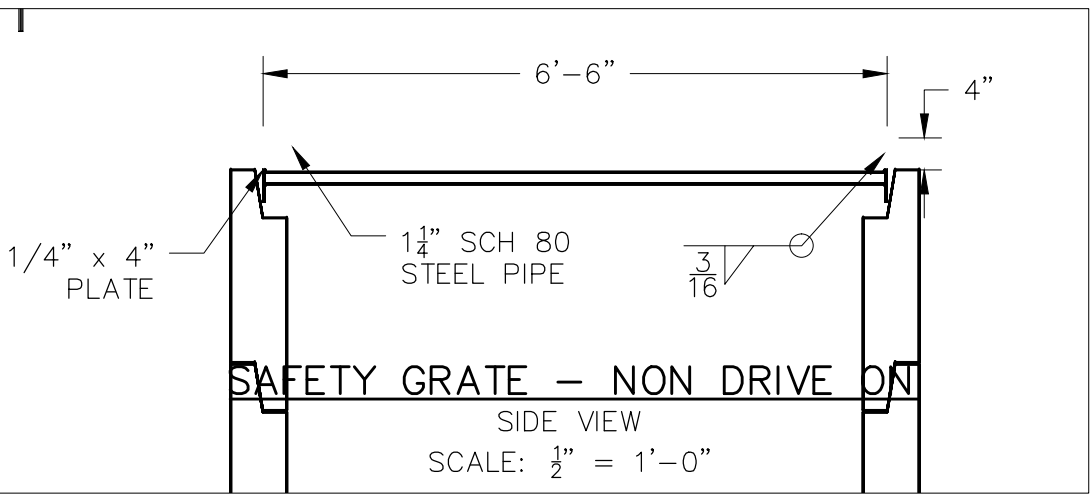
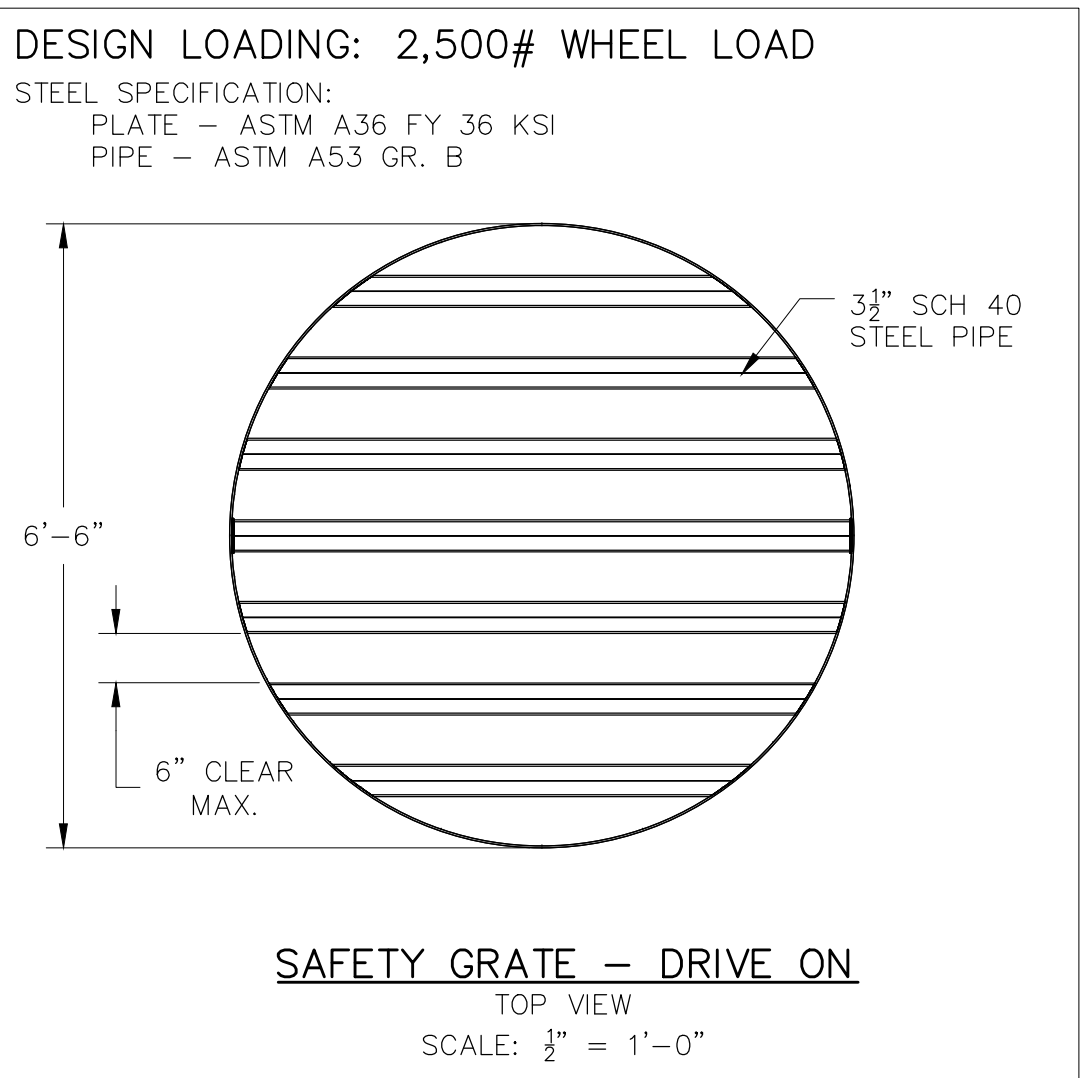
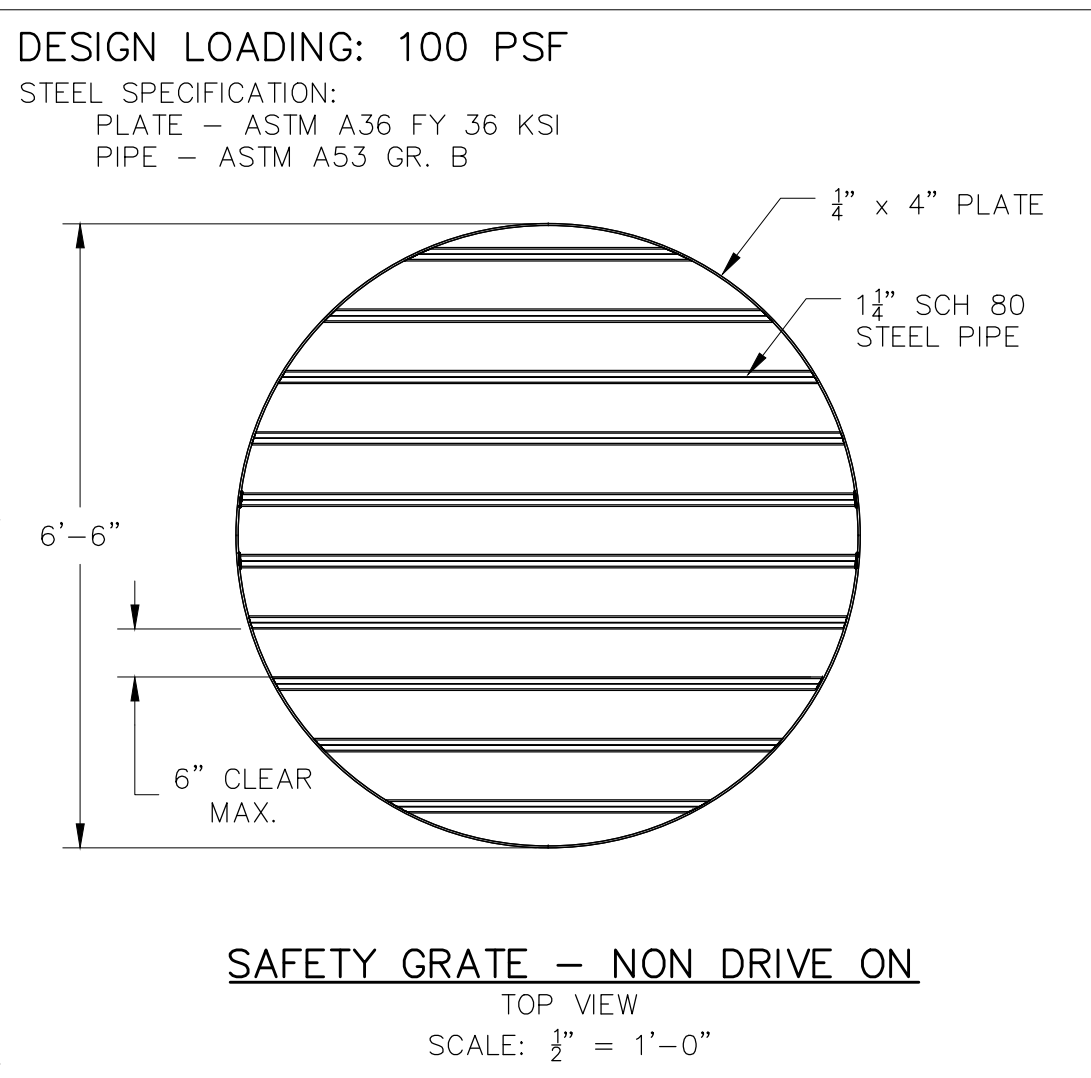
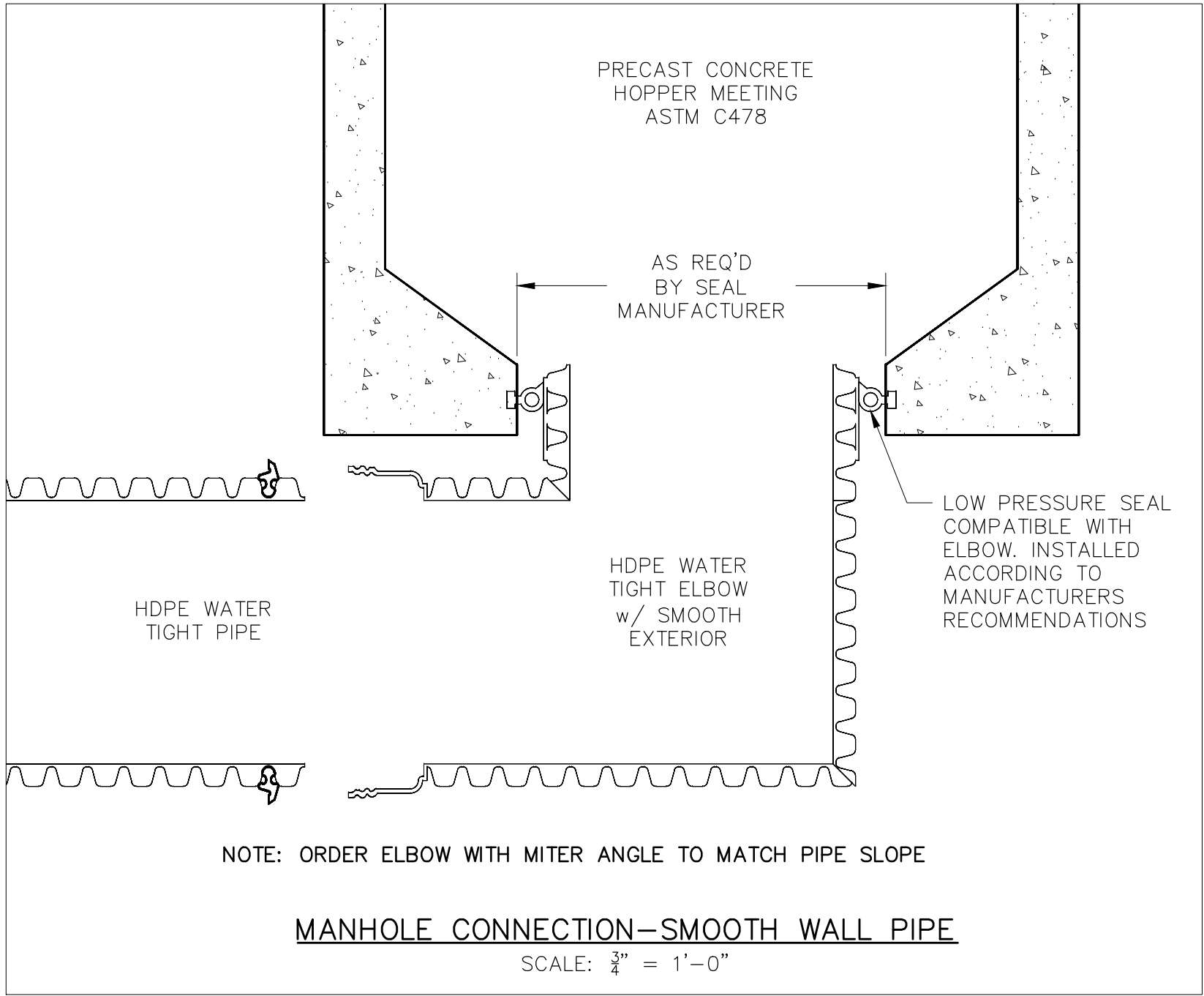




VERMONT STANDARD DRAWING  
GRAVITY WASTE TRANSFER  
HOPPER WITH BOTTOM OUTLET



STANDARD DRAWING—SEE SITE SPECIFIC  
DESIGN FOR ELEVATIONS AND DIMENSIONS

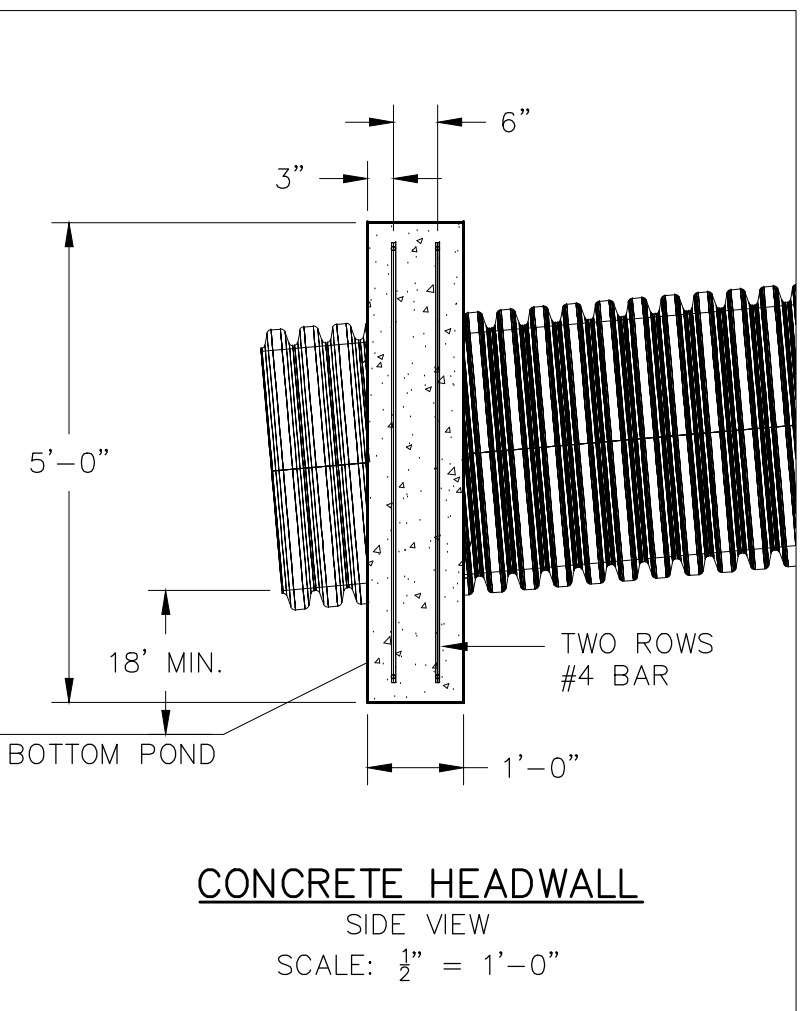
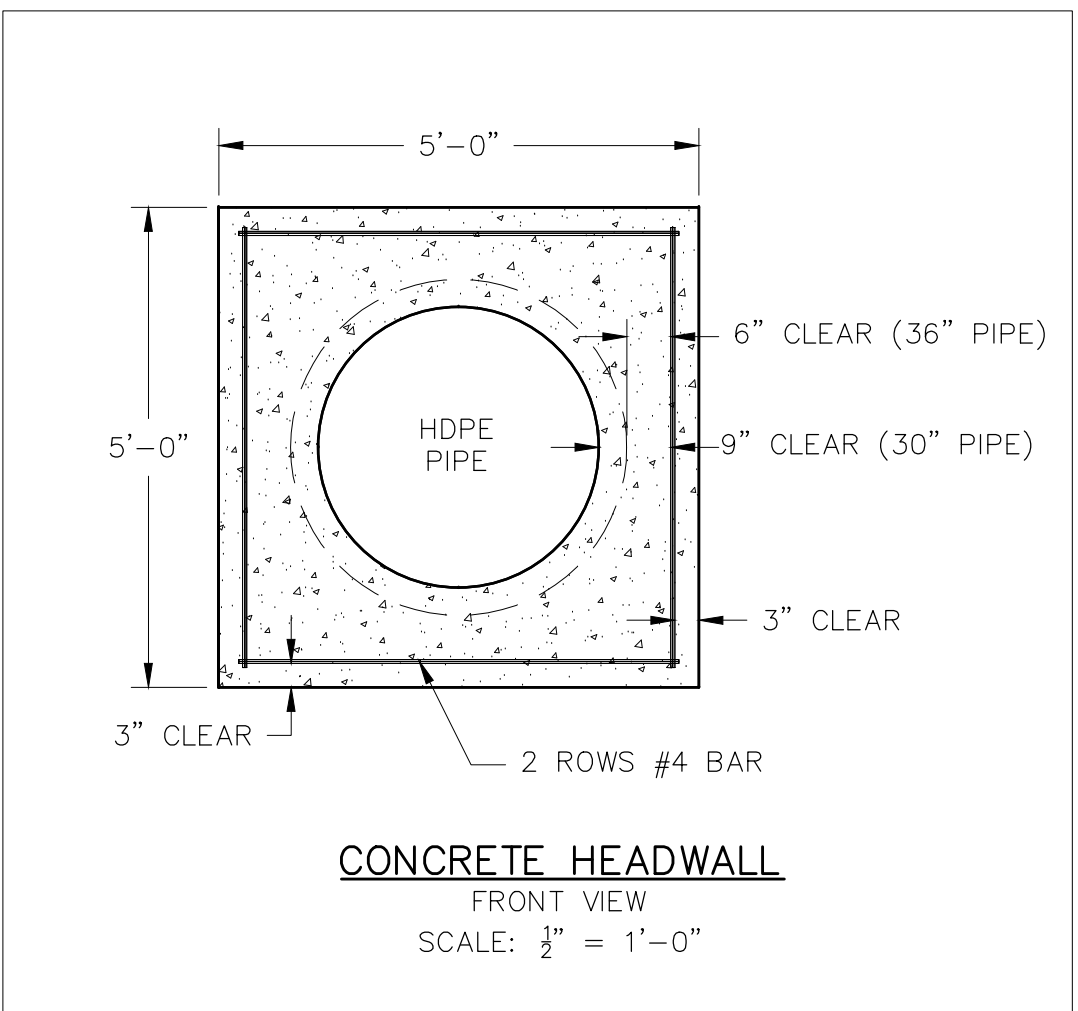
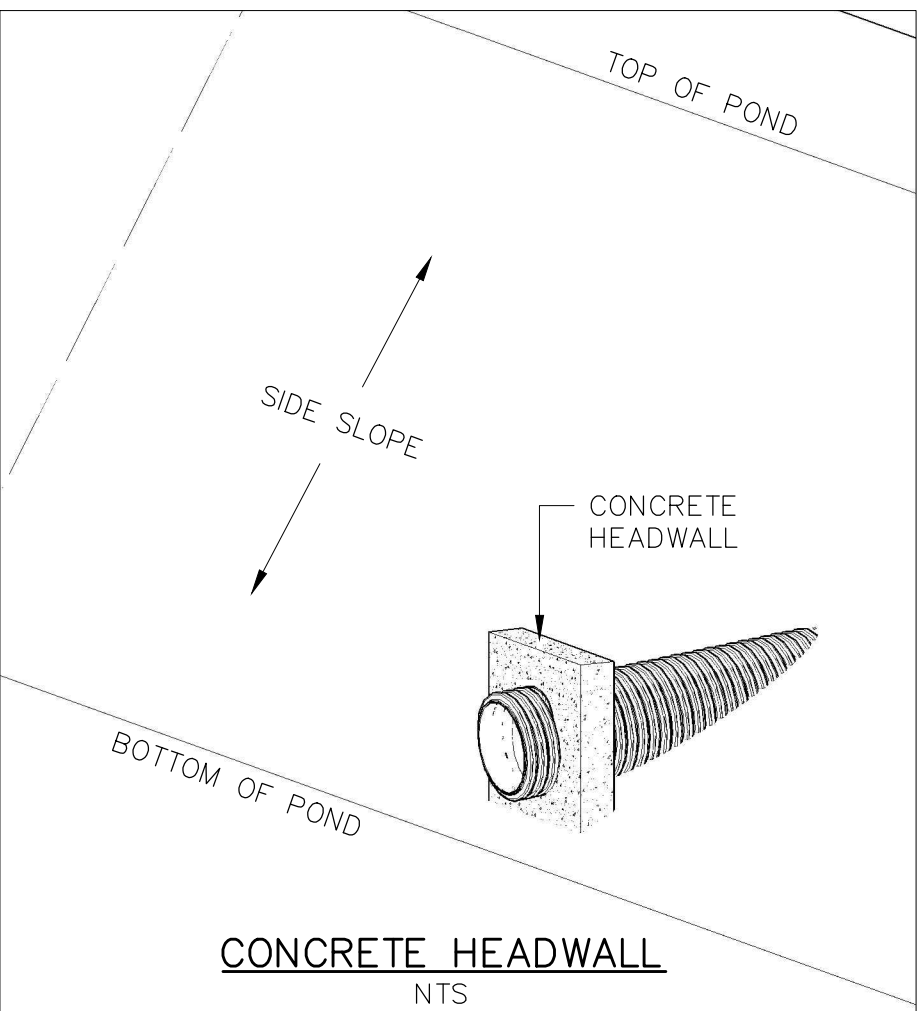


PIPE BEDDING & ENVELOPE GRADATION

SIEVE SIZE	% PASSING
1"	100
$\frac{3}{4}$ "	90 — 100
$\frac{3}{8}$ "	20 — 55
#4 (.187")	0 — 10
#16 (.0465")	0 — 5

DRAINFILL GRADATION

SIEVE SIZE	% PASSING
4"	100
#4 (.187")	20 — 60
#100 (.0984")	0 — 12
#200 (.00295")	0 — 6



Date 3/15  
Designed TATE JEFFREY  
Drawn TATE JEFFREY  
Checked JAKE CLOUGH  
Approved by

United States  
Department of  
Agriculture  
USDA  
Natural Resources  
Conservation Service

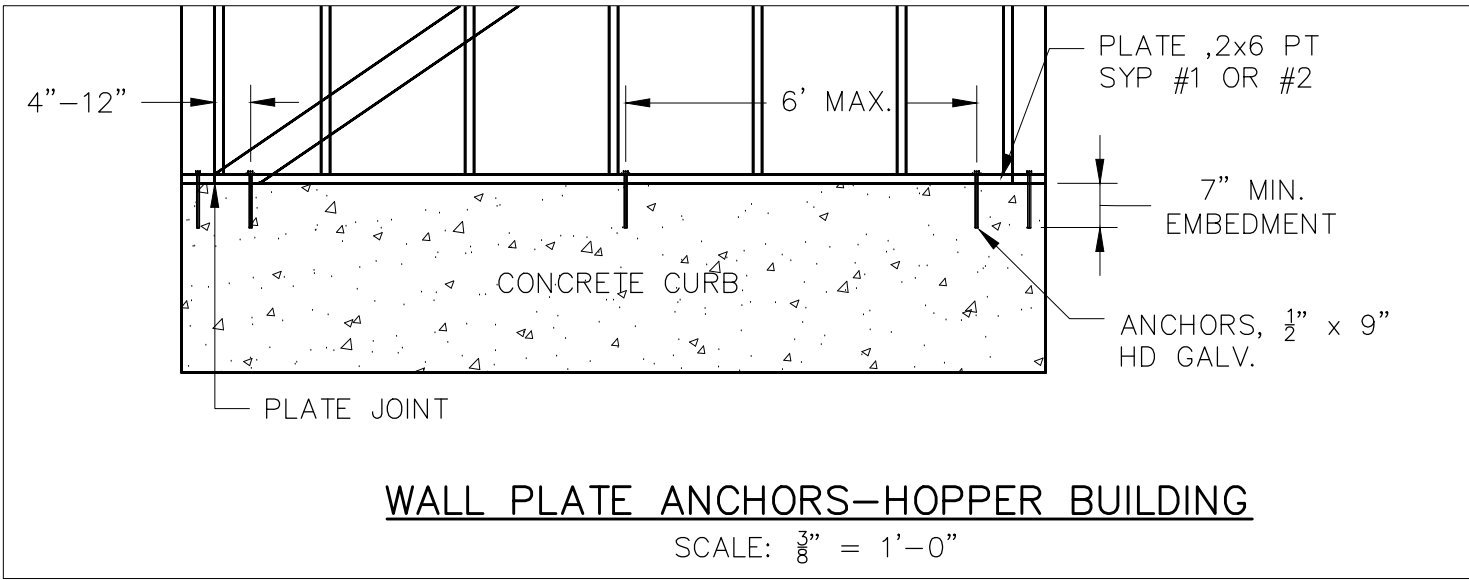
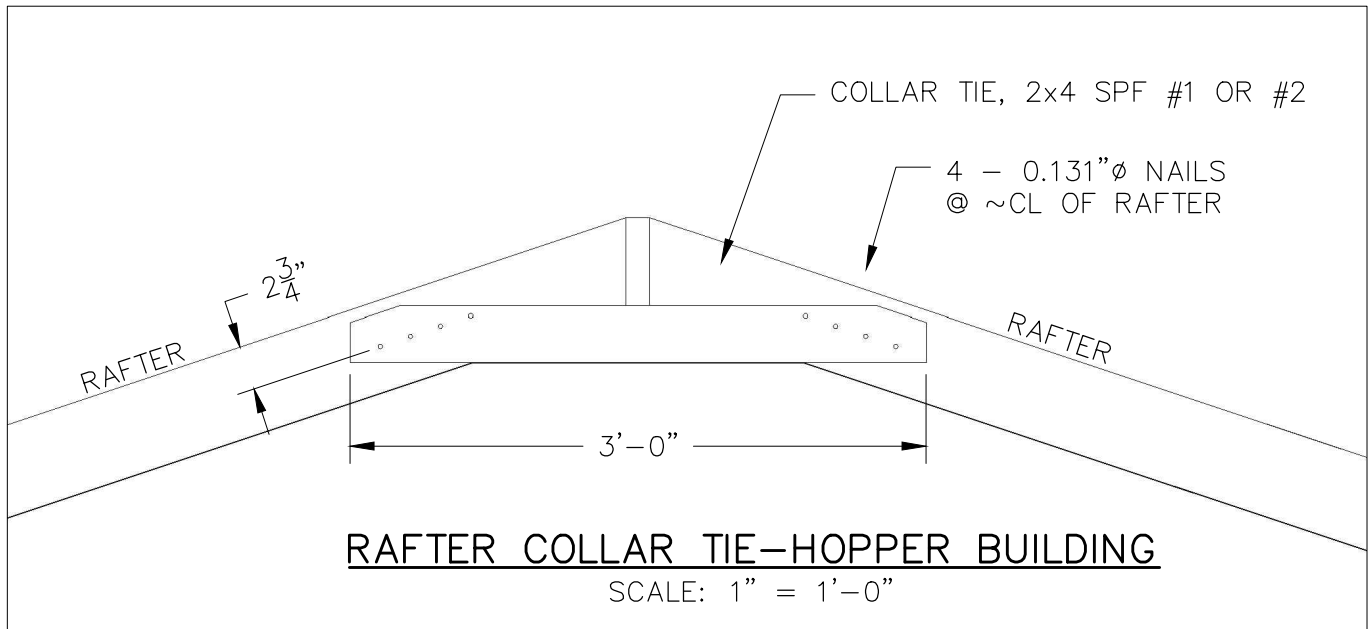
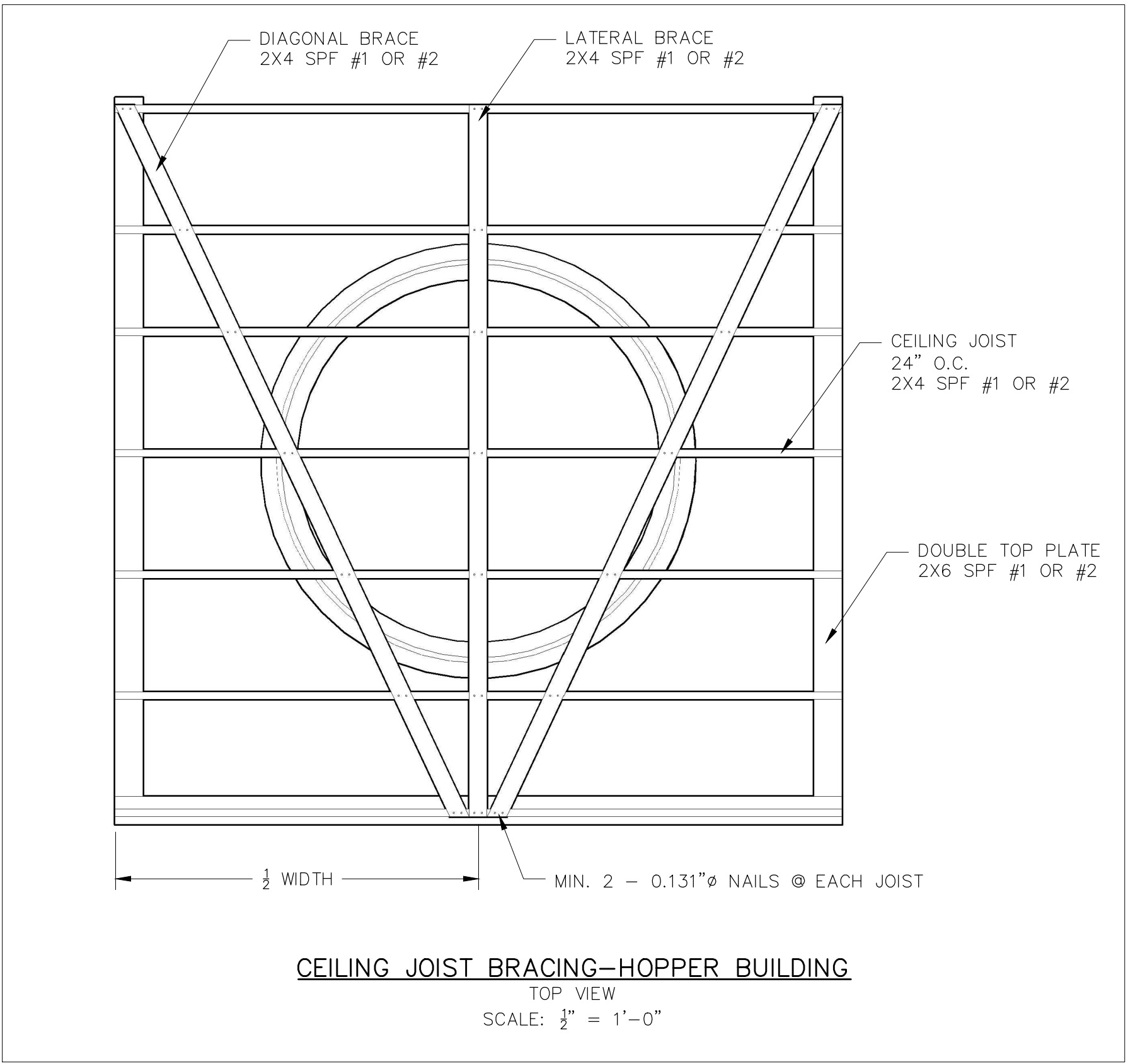
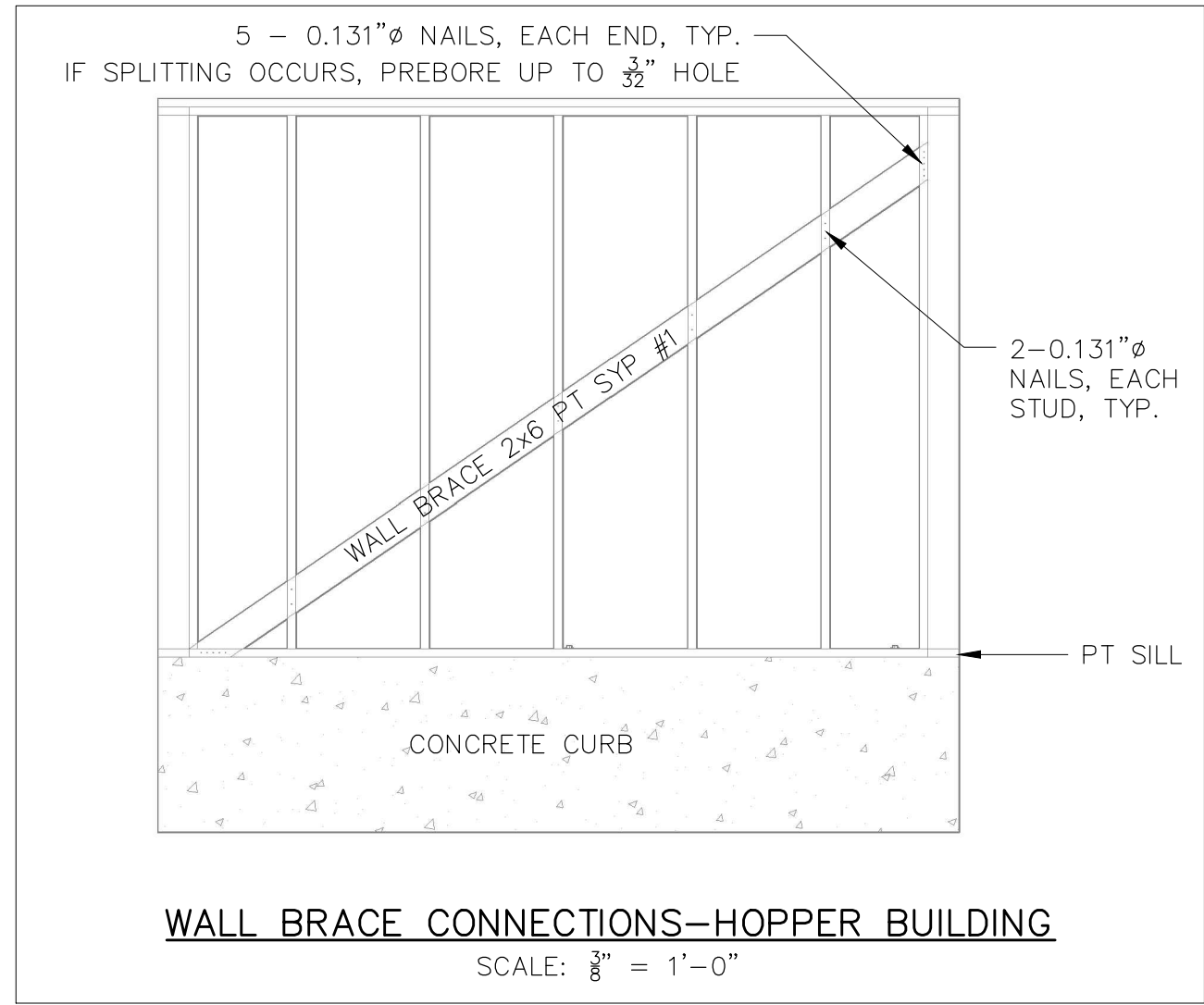
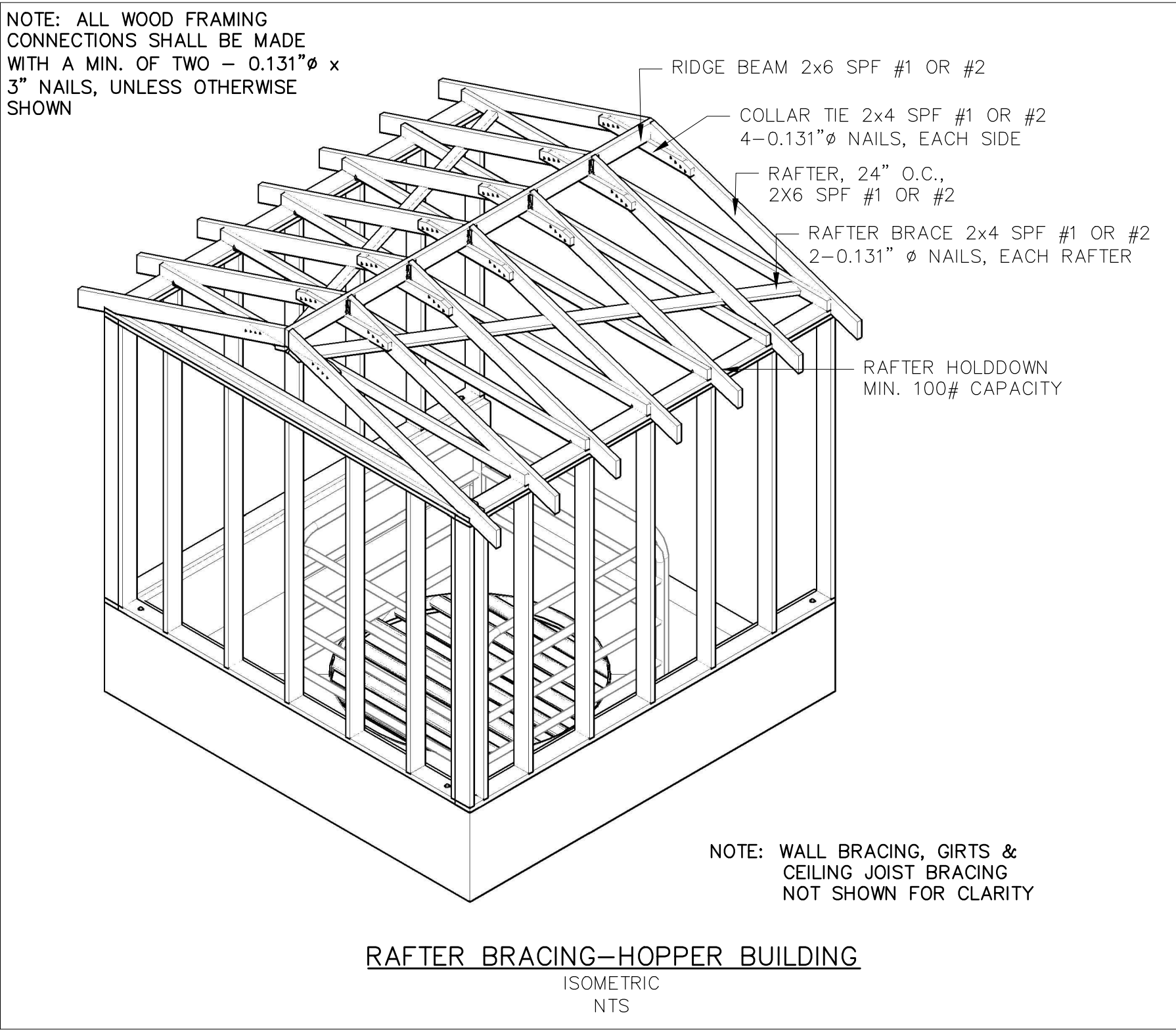
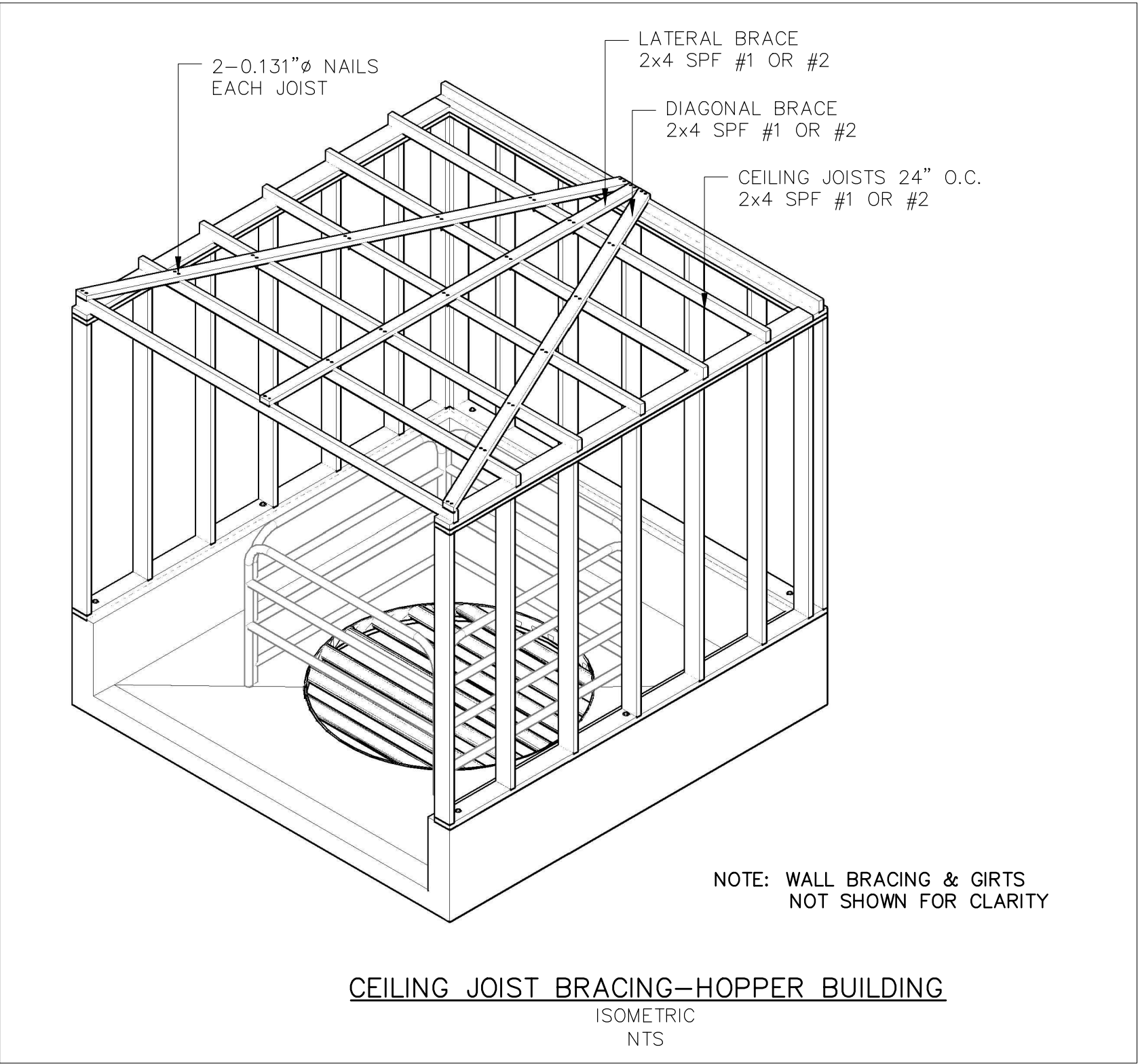
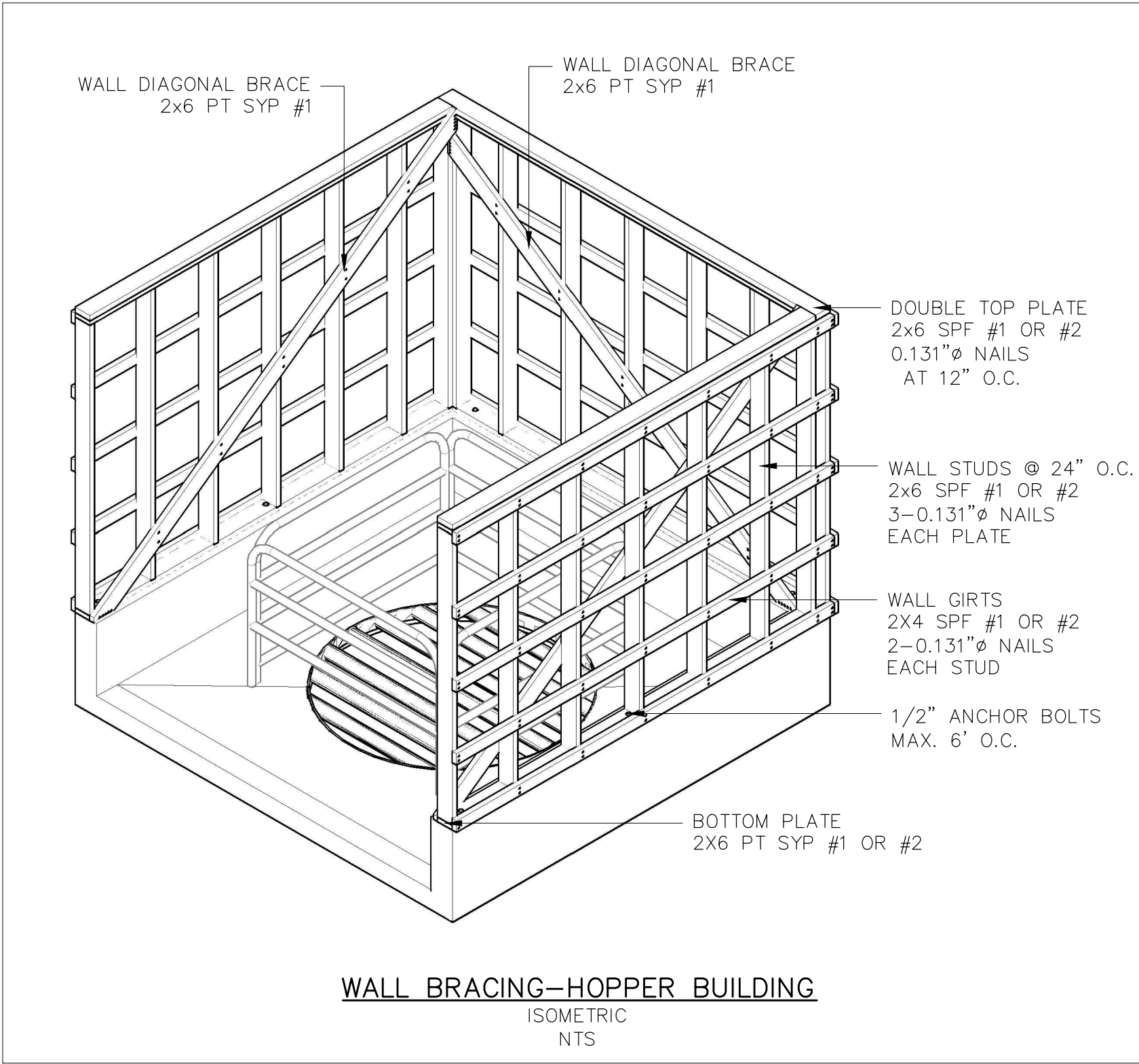
HAZARD CLASS  
LOW  
JOB CLASS  
IV

VERMONT

VERMONT STANDARD DRAWING  
GRAVITY WASTE TRANSFER  
HOPPER WITH BOTTOM OUTLET

File Name  
Drawing Name  
VT-HOPBOTOUT—STD  
Sheet 2 of 3

STANDARD DRAWING—SEE SITE SPECIFIC  
DESIGN FOR ELEVATIONS AND DIMENSIONS



Date 3/15  
Designed TATE JEFFREY  
Drawn TATE JEFFREY  
Checked JAKE CLOUGH  
Approved by  
3/15  
4-1-15  
4-6-15

United States  
Department of  
Agriculture  
Natural Resources  
Conservation Service  
USDA

HAZARD CLASS  
LOW  
JOB CLASS  
IV

VERMONT  
VERMONT STANDARD DRAWING  
GRAVITY WASTE TRANSFER  
HOPPER WITH BOTTOM OUTLET

File Name

Drawing Name  
VT-HOPBOTOUT-STD

Sheet 3 of 3