

CONSTRUCTION NOTES

GENERAL NOTES

1.

ALL ITEMS SHALL BE CONSTRUCTED TO THE DIMENSIONS AND ELEVATIONS SHOWN ON THE DRAWINGS. ANY CHANGES SHALL BE APPROVED BY THE NRCS REPRESENTATIVE ON SITE.
2.

ALL PERMITS, EASEMENTS, AND RIGHTS OF WAY ARE THE RESPONSIBILITY OF THE LANDOWNER.
3.

IT IS THE EXCAVATION CONTRACTORS RESPONSIBILITY TO CALL "DIG SAFE" AND TO COMPLY WITH ALL VERMONT LAWS AND REGULATIONS REGARDING THE LOCATION AND WORK AROUND UNDERGROUND UTILITIES. DIG SAFE (888) 344-7233.
4.

ALL CONSTRUCTION ACTIVITIES SHALL BE DONE IN A MANNER THAT MINIMIZES SEDIMENT FROM ENTERING ANY WATER BODIES, INCLUDING DRAINAGE WAYS, SEE VT D.E.C. SEDIMENT AND EROSION CONTROL HANDBOOKS.
5.

CONSTRUCTION MAY NOT BEGIN UNTIL THE CONTRACTOR, LANDOWNER, AND NRCS HAVE A PRE-CONSTRUCTION MEETING IN ORDER TO DISCUSS THE DETAILS OF THE PROJECT.
6.

IT SHALL BE THE CONTRACTOR'S AND LANDOWNER'S RESPONSIBILITY TO NOTIFY NRCS AT LEAST TWO DAYS IN ADVANCE OF:

A. START OF CONSTRUCTION.

PIPELINE NOTES:

7.

ADD VENTS FOR REMOVING AIR AT SUMMITS IF SPECIFIED. SPECIAL CARE SHALL BE TAKEN DURING THE LAYOUT OF THE PIPELINE TO ELIMINATE GRADE CHANGES THAT CAUSE MINOR HIGH POINTS.
8.

IN LOCATIONS WHERE THE PIPELINE CROSSES A TRAIL OR ACCESS ROAD, PIPE SHALL BE BURIED WITH AT LEAST 12 INCHES OF SOIL OVER THE TOP OF THE PIPE.
9.

INSTALL DRAINS AT LOW POINTS OR MAKE PROVISIONS TO DRAIN THE PIPELINE TO PREVENT FREEZING.
10.

VERIFY FLOAT VALVE AND ALL FITTINGS ARE DESIGNED TO OPERATE AT THE DESIGN FLOW RATE AND PRESSURE.
11.

ALL EXPOSED PIPE SHALL BE ADEQUATELY PROTECTED FROM RADIATION. ALL EXPOSED PVC PIPE SHALL BE PAINTED WITH 2 COATS OF LATEX PAINT.
12.

SYSTEM REQUIREMENTS:

WATER SOURCE INFORMATION:

PRESSURE SOURCE INFORMATION: PSI MINIMUM PRESSURE REQUIRED FOR SYSTEM OPERATION

PRESSURE TANK

PSI KICK ON PRESSURE

PSI KICK OFF PRESSURE

GAL TANK VOLUME

NEW PUMP

EXISTING PUMP HORSEPOWER

FT TOTAL DYNAMIC HEAD MAKE:

GPM PUMP FLOW RATE MODEL:

RESERVOIR (GRAVITY)

FT ELEVATION - RESERVOIR MINIMUM WS

FT ELEVATION - RESERVOIR MAXIMUM WS

FINISH WORK NOTES:

13.

ALL AREAS DISTURBED BY CONSTRUCTION SHALL BE SEEDED AND MULCHED ACCORDING TO CONSTRUCTION SPECIFICATION #52.

LOCATION MAP
SCALE: _____

BILL OF MATERIALS

ITEM #	ITEM	QUANTITY	UNIT	CONSTRUCTION SPECIFICATIONS
1.	SITE PREPARATION	FOR	JOB	1, 5
2.	___" DIA _____ RATED _____ MAINLINE PIPE		L.F.	41
3.	___" DIA _____ RATED _____ LATERAL PIPE		L.F.	41
4.	_____ GAL WATERING TROUGHS		E.A.	41
5.	FLOAT VALVES		E.A.	41



Date

1/1/2021

Designed

Drawn

Checked

Approved by

VT STANDARD DRAWING

United States

Department of

Agriculture

Natural Resources

Conservation Service

USDA

HAZARD CLASS

LOW

JOB CLASS

LIVESTOCK PIPELINE & WATERING FACILITY

CONSTRUCTION NOTES & BILL OF MATERIALS

VERMONT

File Name

Drawing Name

VT-614-001-2021

Sheet

of

PLAN VIEW

[illegible]

File Name

Drawing Name
VT-614-001-2021

Sheet of

LIVESTOCK PIPELINE & WATERING FACILITY
PLAN -- PROFILE

LIVESTOCK PIPELINE & WATERING FACILITY
PLAN -- PROFILE


HAZARD CLASS
LOW


JOB CLASS





**United States
Department of
Agriculture**


**Natural Resources
Conservation Service**

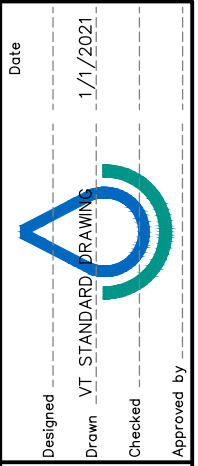
Designed		Date
Drawn		1/1/2021
Checked		
Approved by		

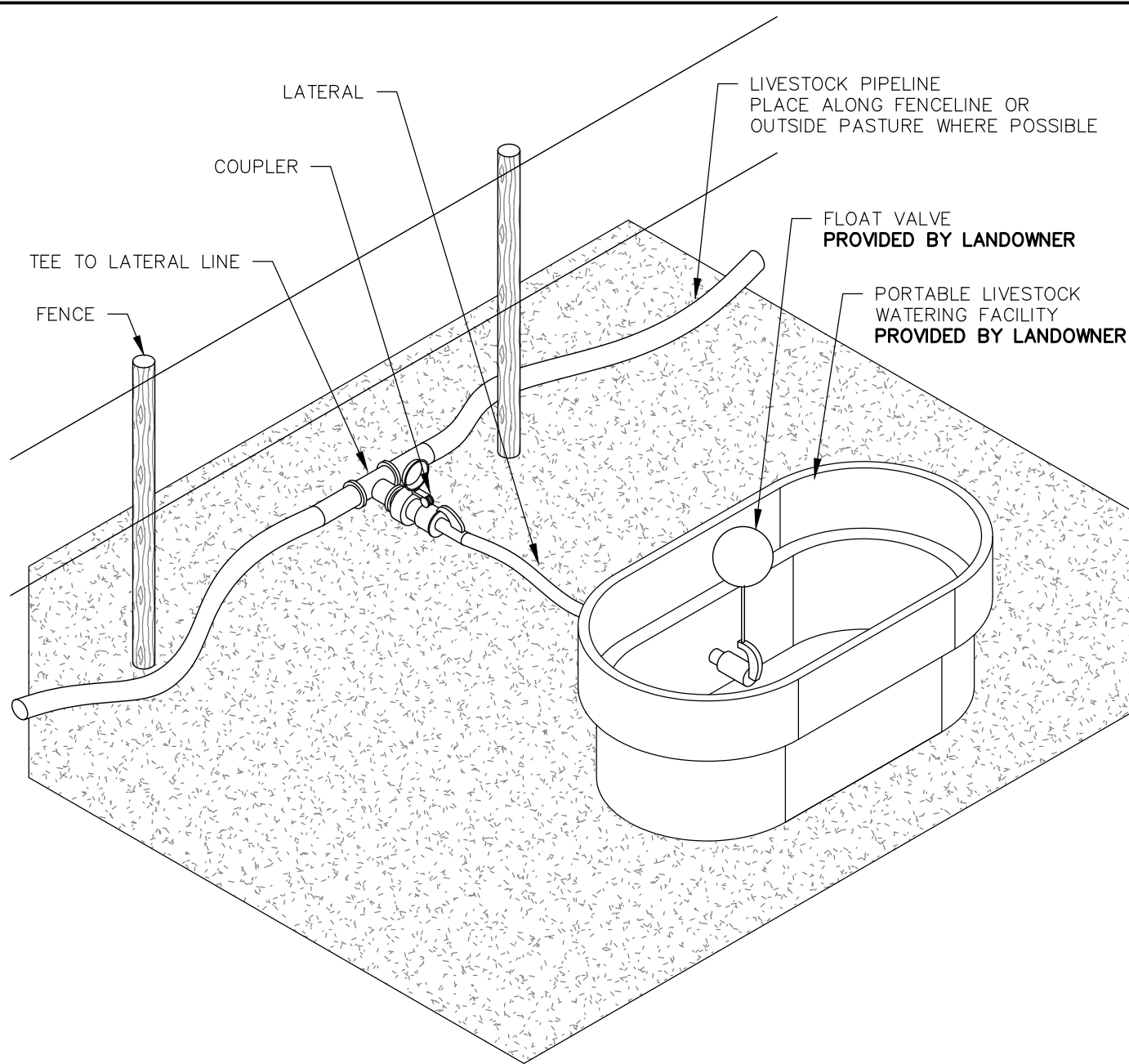
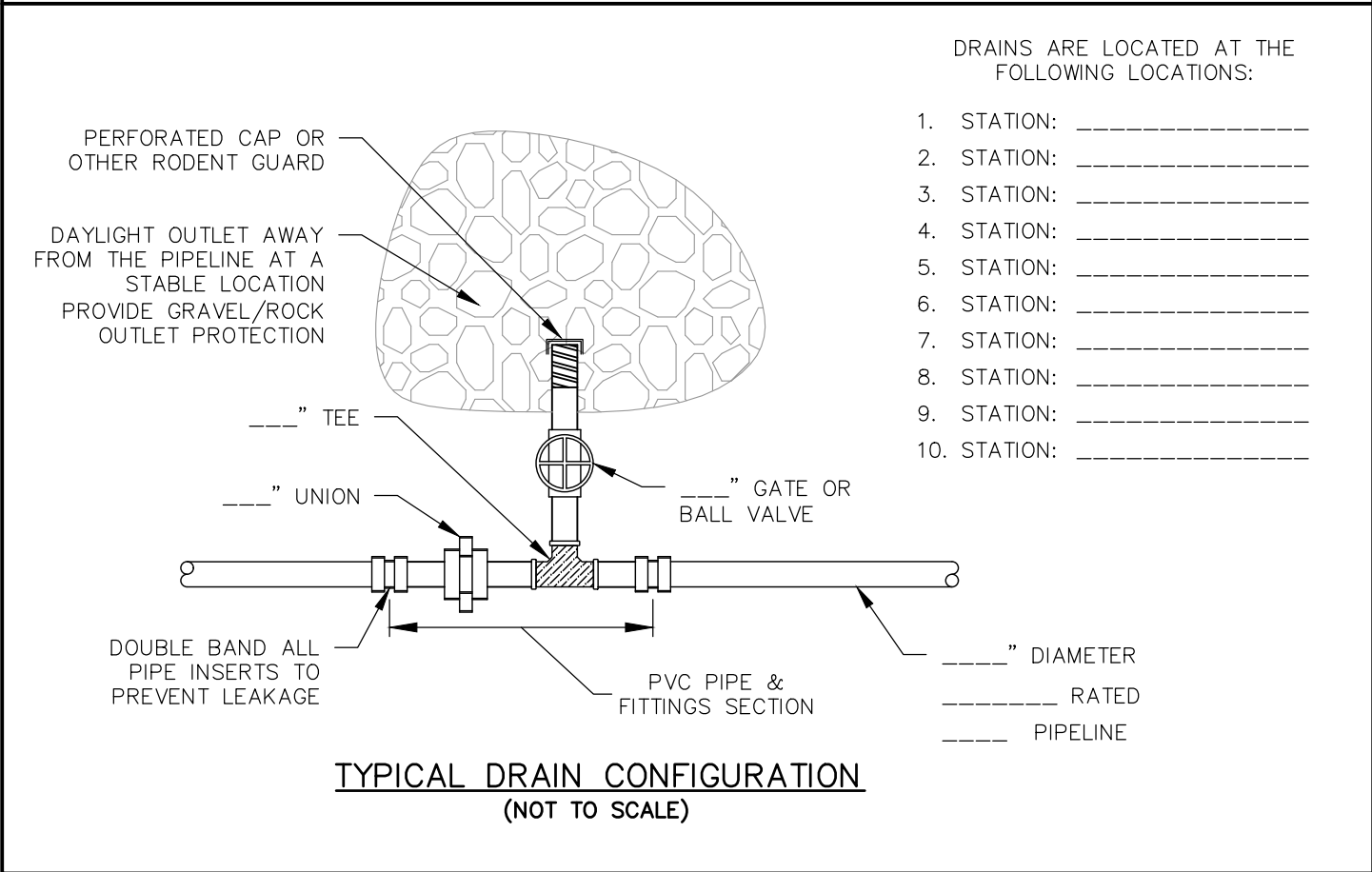
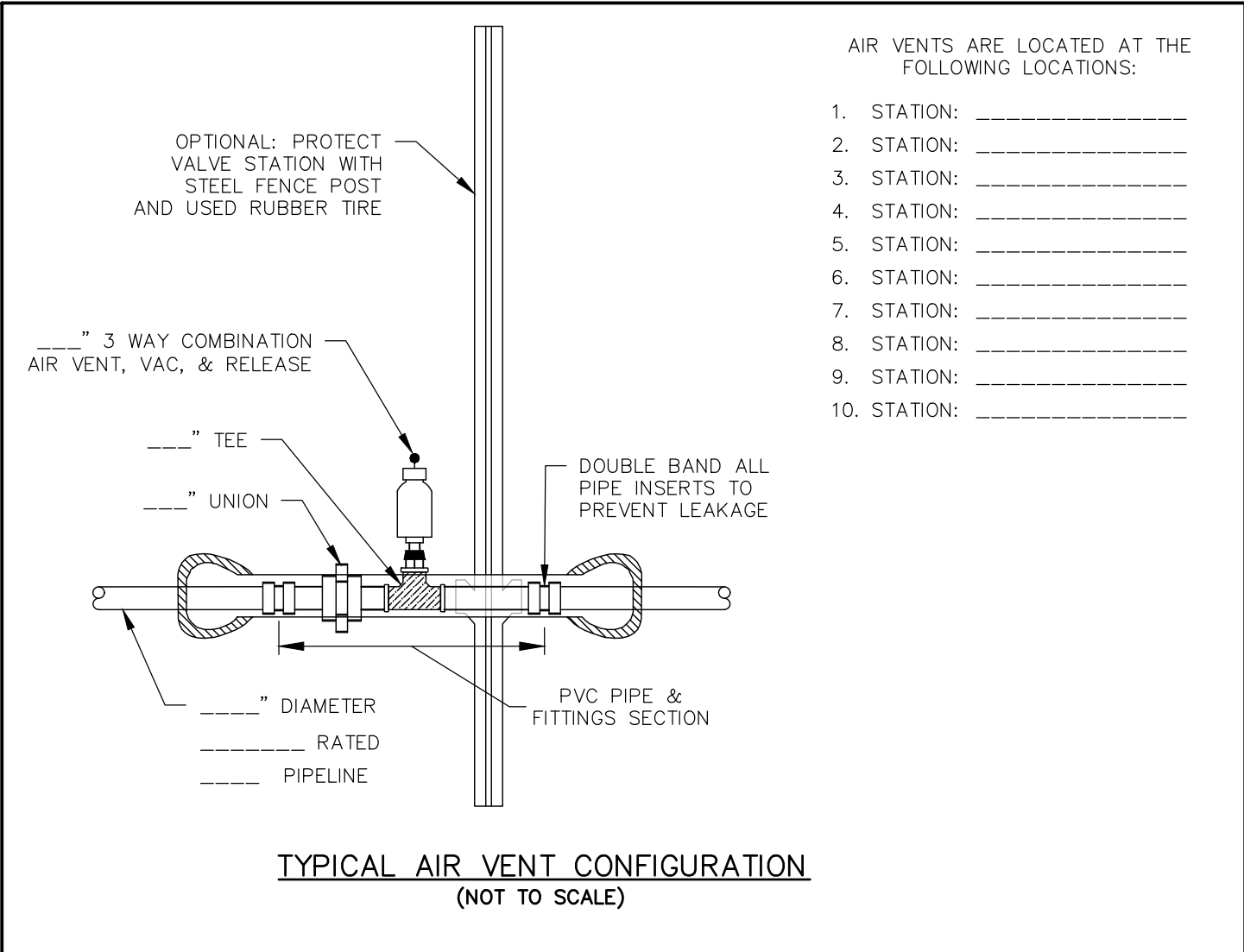
Designed		Date
Drawn		1/1/2021
Checked		
Approved by		

Designed		Date
Drawn		1/1/2021
Checked		
Approved by		

Designed		Date
Drawn		1/1/2021
Checked		
Approved by		

Designed		Date
Drawn		1/1/2021
Checked		
Approved by		





TYPICAL PORTABLE LIVESTOCK WATERING FACILITY & SURFACE PIPELINE LAYOUT
(NOT TO SCALE)

DAILY WATERING REQUIREMENTS		
TYPE OF LIVESTOCK		
NUMBER OF LIVESTOCK		EA.
TOTAL DAILY VOLUME REQUIRED		GALLONS
MINIMUM FLOW RATE		GPM
RECOMMENDED TROUGH SIZE		GALLONS
MINIMUM # TROUGHS PER PASTURE		EACH