

Mississinewa Watershed - 12 Digit HUCs

Mississinewa 8 Digit Watershed (05120103)

Total Acres: 522,449
 Indiana Acres: 502,960
 Ohio Acres: 19,489

Indiana Counties Acres

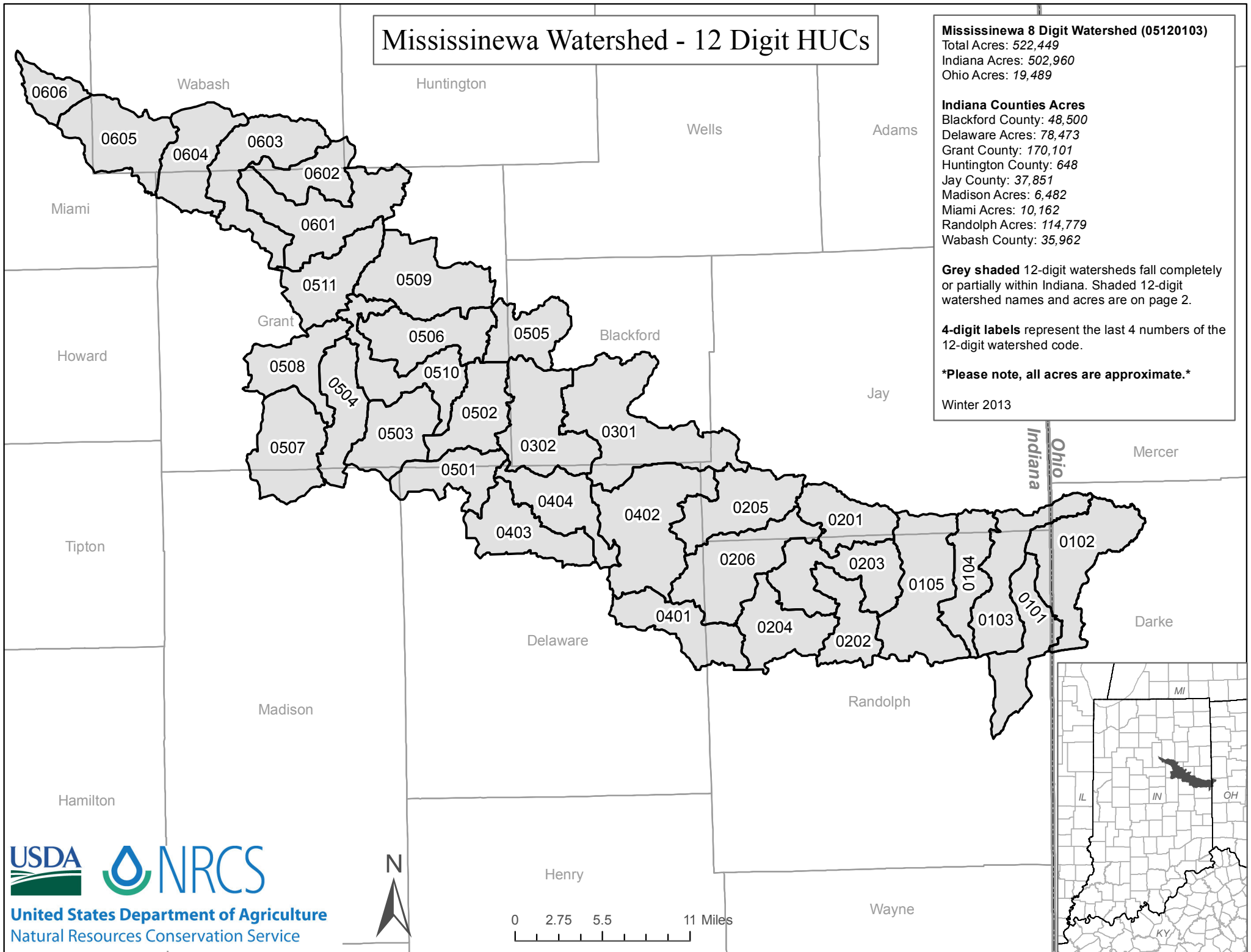
Blackford County: 48,500
 Delaware County: 78,473
 Grant County: 170,101
 Huntington County: 648
 Jay County: 37,851
 Madison Acres: 6,482
 Miami Acres: 10,162
 Randolph Acres: 114,779
 Wabash County: 35,962

Grey shaded 12-digit watersheds fall completely or partially within Indiana. Shaded 12-digit watershed names and acres are on page 2.

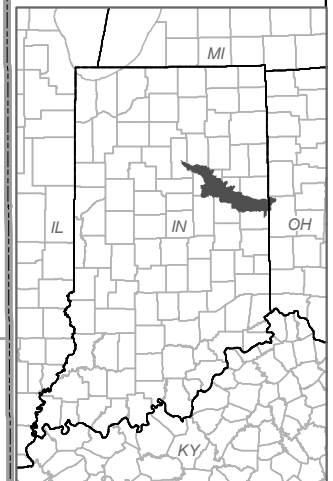
4-digit labels represent the last 4 numbers of the 12-digit watershed code.

Please note, all acres are approximate.

Winter 2013



United States Department of Agriculture
 Natural Resources Conservation Service



Number - 12 Digit HUC	Last 4 Digits of HUC	Name - 12 Digit HUC	Acres within Indiana
051201030101	0101	Little Mississinewa River	13,374.5
051201030102	0102	Gray Branch-Mississinewa River	20,320.7
051201030103	0103	Jordan Creek-Mississinewa River	16,506.3
051201030104	0104	Porter Creek-Mississinewa River	11,012.9
051201030105	0105	Mud Creek-Mississinewa River	22,420.6
051201030201	0201	Days Creek	10,944.7
051201030202	0202	Bear Creek	10,249.1
051201030203	0203	Fetid Creek-Mississinewa River	17,221.0
051201030204	0204	Bush Creek	12,865.5
051201030205	0205	Redkey Run-Halfway Creek	16,029.4
051201030206	0206	Platt Nibarger Ditch-Mississinewa River	19,804.3
051201030301	0301	Little Lick Creek-Big Lick Creek	29,715.7
051201030302	0302	Townsend Lucas Ditch-Big Lick Creek	19,082.9
051201030401	0401	Campbell Creek	13,438.1
051201030402	0402	Rees Ditch-Mississinewa River	25,774.3
051201030403	0403	Studebaker Ditch-Pike Creek	13,828.7
051201030404	0404	Holden Ditch-Mississinewa River	13,026.1
051201030501	0501	Hoppas Ditch-Mississinewa River	10,721.4
051201030502	0502	Lake Branch-Mississinewa River	12,473.7
051201030503	0503	Barren Creek	13,254.2
051201030504	0504	Back Creek	12,083.3
051201030505	0505	Little Walnut Creek-Walnut Creek	10,475.7
051201030506	0506	Walnut Creek	14,900.6
051201030507	0507	Little Deer Creek-Deer Creek	16,602.4
051201030508	0508	Deer Creek	12,348.3
051201030509	0509	Lugar Creek	19,059.3
051201030510	0510	Branch Creek-Mississinewa River	14,637.6
051201030511	0511	Boots Creek-Mississinewa River	13,635.5
051201030601	0601	Hummel Creek-Mississinewa River	20,863.1
051201030602	0602	Metocinah Creek	9,587.8
051201030603	0603	Grant Creek-Mississinewa River	19,351.9
051201030604	0604	Forked Branch-Mississinewa River	14,347.7
051201030605	0605	Mississinewa Lake-Mississinewa River	16,419.6
051201030606	0606	Town of Peoria-Mississinewa River	6,072.1