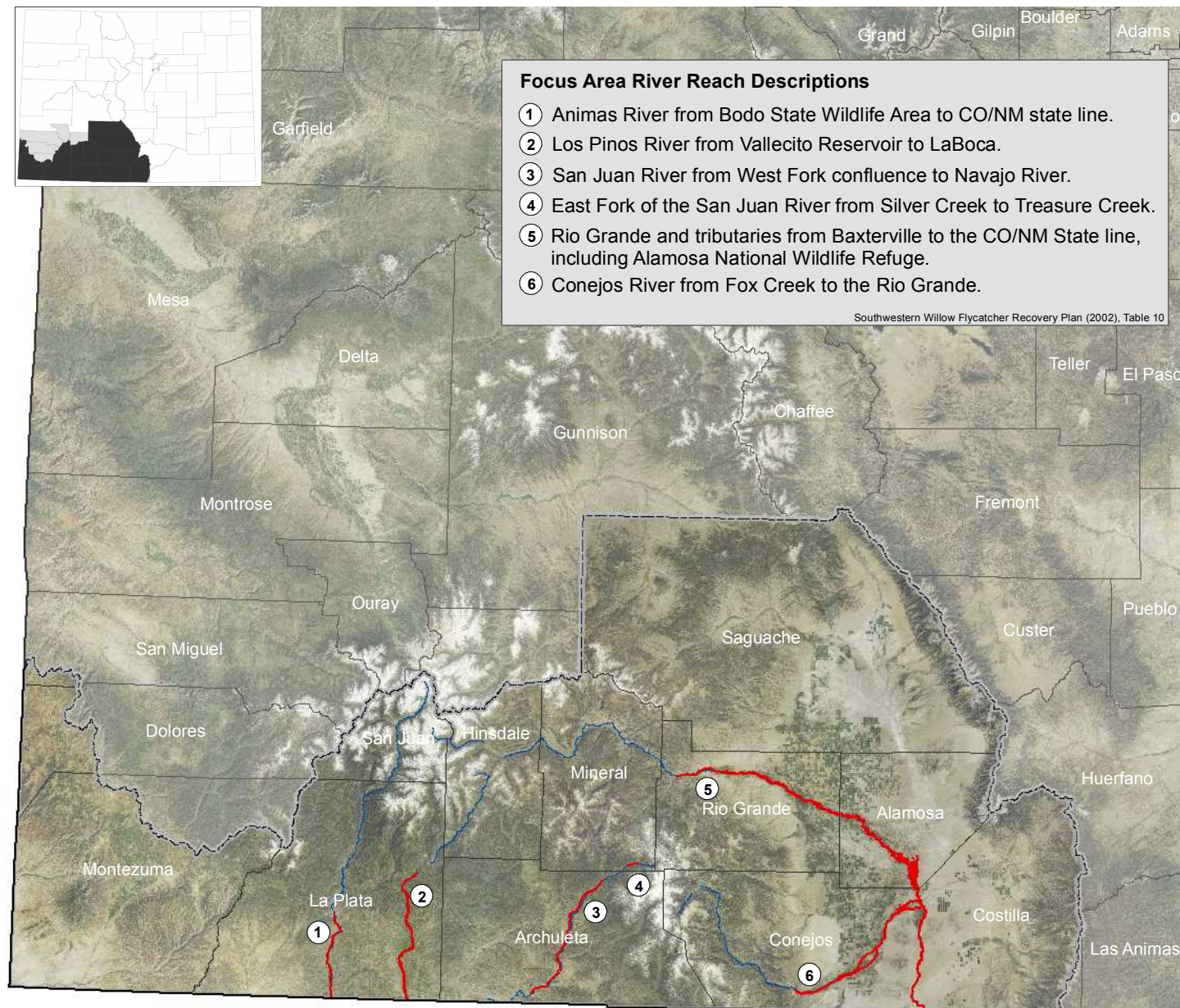


Southwestern Willow Flycatcher 2015 Biological Opinion, Colorado Map



Action Area Further Defined:

The range of potential habitat for the southwestern willow flycatcher; which includes riparian zones with surface water or at least moist soils from May through July. Uplands without riparian association within the range are not included in the Action Area (DOI, 2015).

Data Sources:

DOI ECOS, 2015. Species Profile for Southwestern Willow flycatcher (*Empidonax traillii extimus*). Environmental Conservation Online System. U.S. Fish and Wildlife Service. Accessed: 05/07/2015

DOI, 2015. The U.S. Fish and Wildlife Service's Biological Opinion for the effects of Working Lands for Wildlife (WLFV) implementation on the Southwestern Willow Flycatcher and 84 other federally listed and candidate species in the States of Arizona, California, Colorado, Nevada, New Mexico, and Utah. Washington, DC.

LEGEND



Overall Range of the Action Area

The species is listed wherever it is found, but this is the area in which the species is known to or is believed to occur (DOI ECOS, 2015). - Range of Potential Habitat.



Focus Area

Specific river reaches where recovery efforts should be focused. They include area of current or potential suitable habitat (DOI, 2015).



Helping People Help the Land
An Equal Opportunity Provider and Employer

Scale: 1:2,000,000