

Flatrock-Haw Watershed - 12 Digit HUCs

Flatrock-Haw 8 Digit Watershed (05120205)
Total Acres: 382,594

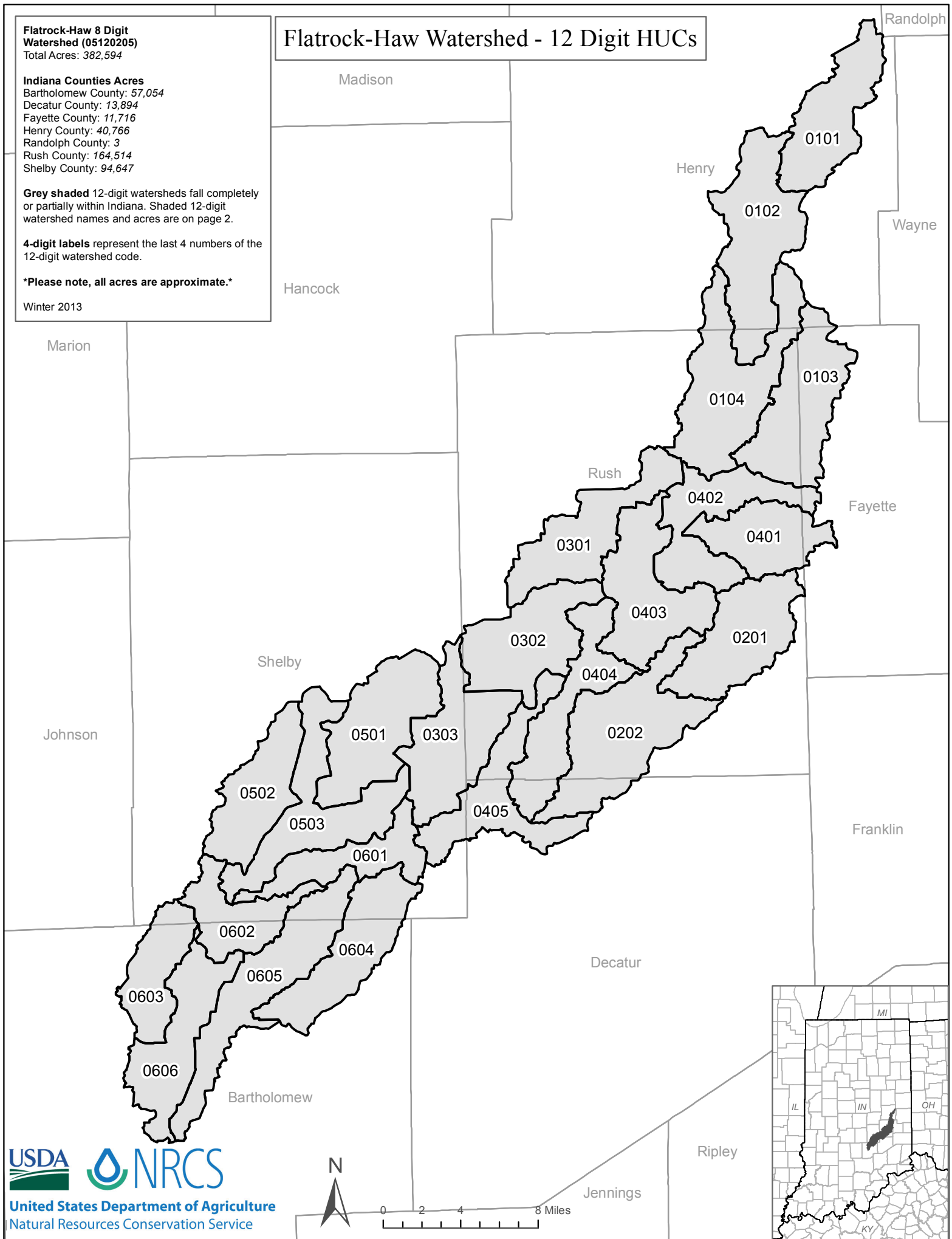
Indiana Counties Acres
Bartholomew County: 57,054
Decatur County: 13,894
Fayette County: 11,716
Henry County: 40,766
Randolph County: 3
Rush County: 164,514
Shelby County: 94,647

Grey shaded 12-digit watersheds fall completely or partially within Indiana. Shaded 12-digit watershed names and acres are on page 2.

4-digit labels represent the last 4 numbers of the 12-digit watershed code.

Please note, all acres are approximate.

Winter 2013



Number - 12 Digit HUC	Last 4 Digits of HUC	Name - 12 Digit HUC	Acres within Indiana
051202050101	0101	Mud Run-Flatrock River	15,177.3
051202050102	0102	Rock Branch-Flatrock River	21,393.5
051202050103	0103	Shawnee Creek	18,902.5
051202050104	0104	Wikoff Ditch-Flatrock River	23,094.2
051202050201	0201	Headwaters Little Flatrock River	16,733.9
051202050202	0202	Lick Creek-Little Flatrock River	23,766.6
051202050301	0301	Mud Creek	16,173.0
051202050302	0302	Goddard Ditch-Conns Creek	17,054.2
051202050303	0303	Little Conns Creek-Conns Creek	17,910.9
051202050401	0401	Ben Davis Creek	12,026.4
051202050402	0402	Turkey Creek-Flatrock River	15,596.3
051202050403	0403	Harrigan Branch-Flatrock River	18,294.0
051202050404	0404	Bob Creek-Flatrock River	15,130.7
051202050405	0405	Mill Creek-Flatrock River	15,352.0
051202050501	0501	Headwaters Lewis Creek	18,602.5
051202050502	0502	Slash Ditch	14,143.5
051202050503	0503	Thompson Ditch-Lewis Creek	19,418.5
051202050601	0601	Town of Geneva-Flatrock River	10,703.1
051202050602	0602	Sidney Branch-Flatrock River	10,687.1
051202050603	0603	Big Slough	10,571.8
051202050604	0604	Haw Creek	16,342.1
051202050605	0605	Little Haw Creek-Haw Creek	19,899.4
051202050606	0606	Town of Northcliff-Flatrock River	15,620.4