

Lower East Fork White Watershed - 12 Digit HUCs

**Lower East Fork White
8 Digit Watershed (05120208)**
Total Acres: 1,297,361

Indiana Counties Acres

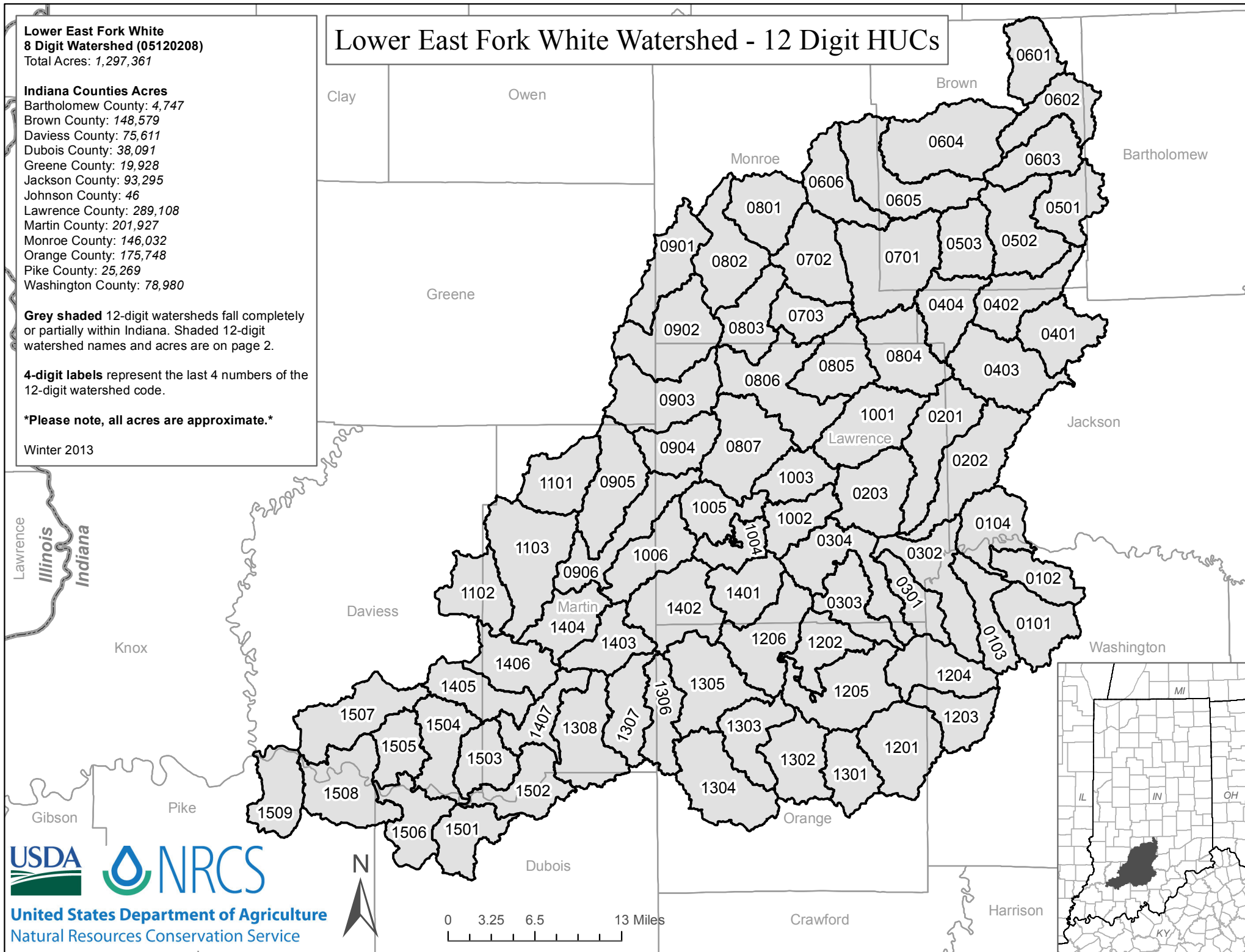
- Bartholomew County: 4,747
- Brown County: 148,579
- Daviess County: 75,611
- Dubois County: 38,091
- Greene County: 19,928
- Jackson County: 93,295
- Johnson County: 46
- Lawrence County: 289,108
- Martin County: 201,927
- Monroe County: 146,032
- Orange County: 175,748
- Pike County: 25,269
- Washington County: 78,980

Grey shaded 12-digit watersheds fall completely or partially within Indiana. Shaded 12-digit watershed names and acres are on page 2.

4-digit labels represent the last 4 numbers of the 12-digit watershed code.

Please note, all acres are approximate.

Winter 2013



United States Department of Agriculture
Natural Resources Conservation Service



Number - 12 Digit HUC	Last 4 Digits of HUC	Name - 12 Digit HUC	Acres within Indiana
051202080101	0101	Rush Creek	15,768.5
051202080102	0102	Buffalo Creek	10,374.0
051202080103	0103	Prow Hollow-Twin Creek	12,328.4
051202080104	0104	Greasy Creek-East Fork White River	15,061.8
051202080201	0201	Back Creek	20,584.7
051202080202	0202	Dry Creek-Guthrie Creek	22,480.6
051202080203	0203	DeWitt Creek-Guthrie Creek	18,848.8
051202080301	0301	Sugar Creek	9,996.0
051202080302	0302	Clifty Creek-East Fork White River	20,121.6
051202080303	0303	Mosquito Creek-Mill Creek	13,001.4
051202080304	0304	Rock Lick Branch-East Fork White River	20,496.0
051202080401	0401	Kiper Creek-Little Salt Creek	14,521.3
051202080402	0402	Little Salt Creek	15,671.0
051202080403	0403	Tipton Creek-South Fork Salt Creek	21,807.6
051202080404	0404	Negro Creek-South Fork Salt Creek	13,539.0
051202080501	0501	Headwaters Middle Fork Salt Creek	13,198.0
051202080502	0502	Pleasant Valley Creek-Middle Fork Salt Creek	20,319.7
051202080503	0503	Gravel Creek-Middle Fork Salt Creek	13,227.6
051202080601	0601	Sweetwater Creek-North Fork Salt Creek	12,230.9
051202080602	0602	East Fork Salt Creek-North Fork Salt Creek	13,710.6
051202080603	0603	Gnaw Bone Creek	13,589.0
051202080604	0604	Clay Lick Creek-North Fork Salt Creek	28,552.1
051202080605	0605	Brummett Creek-Norht Fork Salt Creek	23,839.8
051202080606	0606	Stephens Creek-North Fork Salt Creek	14,936.5
051202080701	0701	Jacobs Creek-Lake Monroe	28,859.2
051202080702	0702	Moore Creek-Lake Monroe	18,226.7
051202080703	0703	Allens Creek-Lake Monroe	10,265.8
051202080801	0801	Jackson Creek-Clear Creek	16,068.2
051202080802	0802	May Creek-Clear Creek	19,185.7
051202080803	0803	Little Clear Creek-Clear Creek	13,270.9
051202080804	0804	Hunter Creek-Little Salt Creek	18,987.1
051202080805	0805	Knob Creek-Little Salt Creek	15,427.3
051202080806	0806	Wolf Creek-Salt Creek	25,228.9
051202080807	0807	Goose Creek-Salt Creek	22,085.6
051202080901	0901	Headwaters Indian Creek	15,652.8
051202080902	0902	Little Indian Creek-Indian Creek	23,156.1
051202080903	0903	Spring Creek-Indian Creek	21,511.1
051202080904	0904	Silverville Branch-Indian Creek	12,627.9
051202080905	0905	Sulphur Creek	19,636.7
051202080906	0906	Opossum Creek-Indian Creek	17,673.4
051202081001	1001	Headwaters Leatherwood Creek	20,297.3
051202081002	1002	Sheeks Lake-East Fork White River	10,905.6
051202081003	1003	Spider Creek-East Fork White River	10,613.3
051202081004	1004	Bryantsville Karst Area	8,536.9
051202081005	1005	Crooked Creek-East Fork White River	11,866.5
051202081006	1006	Henshaw Bend-East Fork White River	16,213.5
051202081101	1101	Turkey Creek-Boggs Creek	15,212.3
051202081102	1102	West Boggs Lake	14,092.4
051202081103	1103	Seed Tick Creek-Boggs Creek	27,719.4
051202081201	1201	Stampers Creek	20,405.9
051202081202	1202	Orleans Karst Area	12,198.2
051202081203	1203	South Fork Lost River	11,980.8
051202081204	1204	Carters Creek-Lost River	16,284.0
051202081205	1205	Lost River Sink	23,013.3
051202081206	1206	Mt. Horeb Drain-Lost River	19,818.5
051202081301	1301	Headwaters Lick Creek	12,087.5
051202081302	1302	Log Creek-Lick Creek	15,913.7
051202081303	1303	Scott Hollow-Lick Creek	13,870.0
051202081304	1304	French Lick Creek	21,927.5
051202081305	1305	Sulphur Creek-Lost River	20,855.6
051202081306	1306	Sams Creek-Lost River	12,151.6
051202081307	1307	Big Creek-Lost River	13,780.5
051202081308	1308	Grassy Creek-Lost River	19,874.3
051202081401	1401	Georgia Karst Area	13,502.7
051202081402	1402	South Fork Beaver Creek	21,090.7
051202081403	1403	Beaver Creek	12,356.5
051202081404	1404	Beech Creek-East Fork White River	13,592.9
051202081405	1405	Haw Creek	12,920.5
051202081406	1406	Friends Creek-East Fork White River	14,289.5
051202081407	1407	Plaster Creek-East Fork White River	11,247.7
051202081501	1501	Mill Creek	12,521.7
051202081502	1502	Hoffman Run-East Fork White River	14,351.6
051202081503	1503	Slate Creek	11,987.2
051202081504	1504	Sugar Creek-East Fork White River	15,444.7
051202081505	1505	Dogwood Lake-Mud Creek	10,721.6
051202081506	1506	Birch Creek-East Fork White River	13,977.7
051202081507	1507	Aikman Creek	19,462.2
051202081508	1508	Bear Creek-East Fork White River	20,841.9
051202081509	1509	Mud Creek-East Fork White River	13,365.2