

Lower White 8 Digit Watershed (05120202)
Total Acres: 1,070,077

Indiana Counties Acres

Brown County: 40,520
Daviess County: 203,754
Gibson County: 22,465
Greene County: 292,410
Johnson County: 111
Knox County: 188,714
Martin County: 14,946
Monroe County: 105,931
Morgan County: 4
Owen County: 138,995
Pike County: 44,906
Sullivan County: 17,321

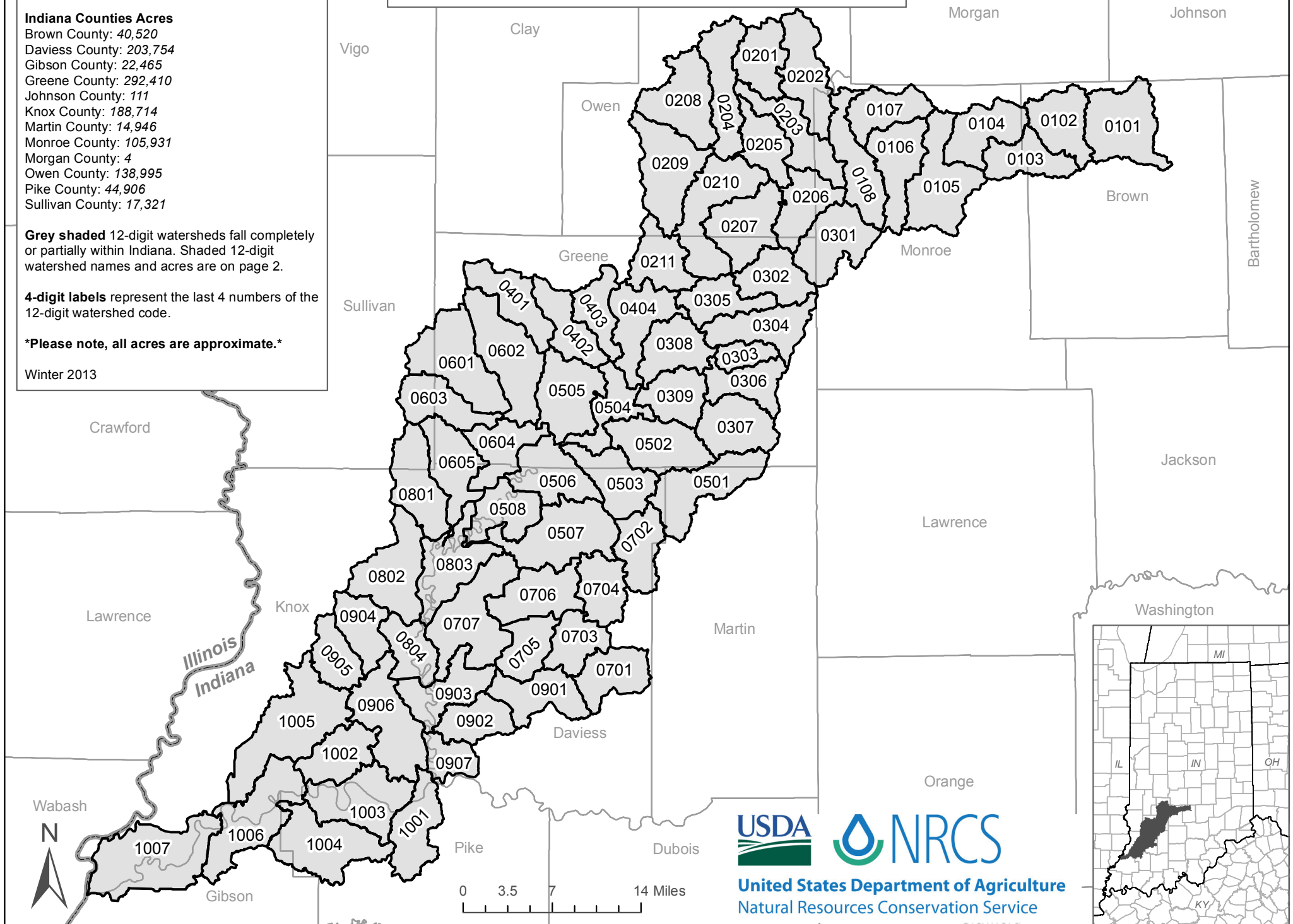
Grey shaded 12-digit watersheds fall completely or partially within Indiana. Shaded 12-digit watershed names and acres are on page 2.

4-digit labels represent the last 4 numbers of the 12-digit watershed code.

Please note, all acres are approximate.

Winter 2013

Lower White Watershed - 12 Digit HUCs



Number - 12 Digit HUC	Last 4 Digits of HUC	Name - 12 Digit HUC	Acres within Indiana
051202020101	0101	North Fork Beanblossom Creek	20,068.3
051202020102	0102	Bear Creek-Beanblossom Creek	13,670.3
051202020103	0103	Lake Lemon-Beanblossom Creek	11,768.4
051202020104	0104	Honey Creek-Beanblossom Creek	14,070.7
051202020105	0105	Buck Creek-Beanblossom Creek	21,141.7
051202020106	0106	Stout Creek-Beanblossom Creek	15,511.6
051202020107	0107	Indian Creek-Beanblossom Creek	11,672.5
051202020108	0108	Jacks Defeat Creek-Beanblossom Creek	15,355.9
051202020201	0201	Little Mill Creek-Mill Creek	12,168.1
051202020202	0202	Limestone Creek-White River	16,680.9
051202020203	0203	Fall Creek-White River	14,392.6
051202020204	0204	Rattlesnake Creek	16,108.4
051202020205	0205	Elliston Creek-White River	10,972.7
051202020206	0206	Little Raccoon Creek-Raccoon Creek	12,772.6
051202020207	0207	Lick Creek-Raccoon Creek	16,922.0
051202020208	0208	East Fork Fish Creek	18,488.9
051202020209	0209	Sand Lick Creek-Fish Creek	20,381.1
051202020210	0210	Mills Creek-White River	21,261.8
051202020211	0211	Goose Creek-White River	12,447.0
051202020301	0301	Little Richland Creek-Richland Creek	16,502.4
051202020302	0302	Blakeman Hollow-Richland Creek	12,052.2
051202020303	0303	Bridge Creek	5,394.5
051202020304	0304	Beech Creek	14,857.3
051202020305	0305	Dry Branch-Richland Creek	10,911.0
051202020306	0306	Clifty Branch	11,168.2
051202020307	0307	Black Ankle Creek-Plummer Creek	15,034.8
051202020308	0308	Ore Branch-Richland Creekh	13,278.3
051202020309	0309	Burcham Branch-Plummer Creek	11,747.7
051202020401	0401	Headwaters Lattas Creek	13,498.5
051202020402	0402	Miller Creek-Lattas Creek	11,848.0
051202020403	0403	Sloan Ditch-Lattas Creek	9,905.8
051202020404	0404	Kelly Branch-White River	15,650.2
051202020501	0501	Lake Greenwood-First Creek	18,635.5
051202020502	0502	Bogard Creek-Doans Creek	17,089.4
051202020503	0503	Rocky Branch-First Creek	14,572.1
051202020504	0504	Gilbert Creek-White River	11,048.4
051202020505	0505	Fourmile Creek	17,802.4
051202020506	0506	Vertrees Ditch-White River	15,163.9
051202020507	0507	Kane Ditch-Smothers Creek	22,802.7
051202020508	0508	McGinnis Levee-White River	12,315.7
051202020601	0601	Headwaters Black Creek	22,067.4
051202020602	0602	Buck Creek	22,411.1
051202020603	0603	Brewer Ditch-Black Creek	12,790.8
051202020604	0604	Calico Slash Ditches-Black Creek	12,465.6
051202020605	0605	Singer Ditch-Black Creek	14,953.3
051202020701	0701	Flat Creek-South Fork Prairie Creek	12,631.0
051202020702	0702	Headwaters North Fork Prairie Creek	12,197.2
051202020703	0703	Dinken Creek-South Fork Prairie Creek	10,623.0
051202020704	0704	Barnes Creek-North Fork Prairie Creek	11,573.8
051202020705	0705	Eagan Ditch-South Fork Prairie Creek	10,691.5
051202020706	0706	Bethel Ditch-North Fork Prairie Creek	15,717.8
051202020707	0707	Killion Canal-Prairie Creek	23,843.2
051202020801	0801	White River	16,301.6
051202020802	0802	Pickel Ditch-Indian Creek	19,597.1
051202020803	0803	Smothers Creek-White River	17,016.8
051202020804	0804	Bens Creek-White River	10,658.2
051202020901	0901	Hurricane Creek-Veale Creek	13,985.5
051202020902	0902	Veale Creek	10,760.6
051202020903	0903	Hawkins Creek-White River	14,136.5
051202020904	0904	Roberson Ditch	11,321.9
051202020905	0905	Headwaters Kessinger Ditch	10,110.0
051202020906	0906	Opossum Branch-Kessinger Ditch	21,577.3
051202020907	0907	Jackson Pond-White River	7,324.3
051202021001	1001	Lick Creek-White River	14,409.2
051202021002	1002	McCoy Creek-Wilson Creek	12,714.6
051202021003	1003	Buchthorn Creek-White River	19,481.1
051202021004	1004	Little Conger Creek-Conger Creek	21,554.1
051202021005	1005	Upper River DeShee	29,643.0
051202021006	1006	Robb Creek-White River	22,342.5
051202021007	1007	Claypole Pond-White River	28,042.8