

Middle Wabash-Busseron Watershed - 12 Digit HUCs

**Middle Wabash-Busseron
8 Digit Watershed (05120111)**
 Total Acres: 1,297,057
 Illinois Acres: 578,537
 Indiana Acres: 718,520

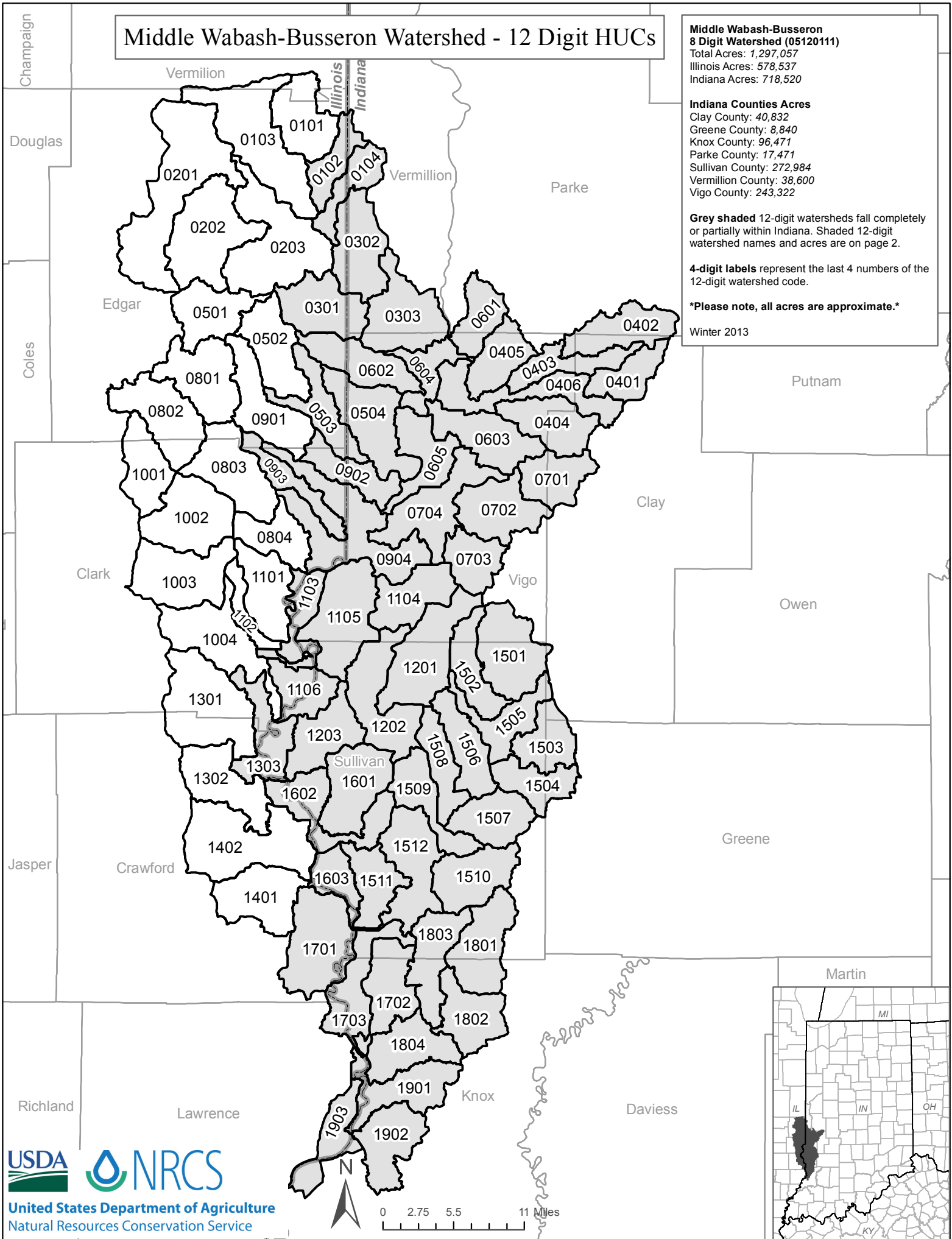
Indiana Counties Acres
 Clay County: 40,832
 Greene County: 8,840
 Knox County: 96,471
 Parke County: 17,471
 Sullivan County: 272,984
 Vermillion County: 38,600
 Vigo County: 243,322

Grey shaded 12-digit watersheds fall completely or partially within Indiana. Shaded 12-digit watershed names and acres are on page 2.

4-digit labels represent the last 4 numbers of the 12-digit watershed code.

Please note, all acres are approximate.

Winter 2013



Number - 12 Digit HUC	Last 4 Digits of HUC	Name - 12 Digit HUC	Acres within Indiana
051201110102	0102	Salt Fork	1,635.8
051201110104	0104	Goose Creek-Crabapple Creek	5,576.4
051201110301	0301	Coal Creek	3,183.2
051201110302	0302	Little Creek-Brouilletts Creek	13,763.8
051201110303	0303	Gin Creek-Brouilletts Creek	19,831.1
051201110401	0401	Headwaters Otter Creek	10,089.8
051201110402	0402	North Branch Otter Creek	14,488.6
051201110403	0403	Little Creek-North Branch Otter Creek	10,660.5
051201110404	0404	Sulfur Creek	14,775.8
051201110405	0405	Gundy Ditch	11,707.5
051201110406	0406	Wastewaters Creek-Otter Creek	17,700.1
051201110503	0503	Indian Creek-Sugar Creek	1,521.6
051201110504	0504	East Little Sugar Creek-Sugar Creek	16,554.7
051201110601	0601	Spring Creek	10,203.8
051201110602	0602	North Coal Creek-Coal Creek	9,579.2
051201110603	0603	Lost Creek	16,743.6
051201110604	0604	South Salt Creek-Wabash River	9,212.6
051201110605	0605	Izaak Walton Lake-Wabash River	13,541.6
051201110701	0701	Headwaters Honey Creek	12,085.7
051201110702	0702	Stone Quarry Branch-Honey Creek	16,545.3
051201110703	0703	Paint Mill Lake	10,767.8
051201110704	0704	Thompson Ditch-Honey Creek	20,023.8
051201110902	0902	South Lake-Clear Creek	6,225.1
051201110903	0903	Hawks Creek-Wabash River	12.6
051201110904	0904	Crooked Creek	15,720.6
051201111101	1101	Neely Creek-Sugar Creek	125.8
051201111103	1103	Oxendine Bayou-Wabash River	5,535.0
051201111104	1104	Headwaters Prairie Creek	14,292.9
051201111105	1105	Negro Ditch-Prairie Creek	22,815.4
051201111106	1106	Town of Riverton-Wabash River	5,083.7
051201111201	1201	Thunderbird Pond-Turman Creek	22,717.0
051201111202	1202	West Fork Turman Creek	20,856.5
051201111203	1203	Town of Dodds Bridge-Turman Creek	14,669.6
051201111303	1303	Kelley Bayou-Wabash River	5,645.2
051201111501	1501	Chowning Creek-Busseron Creek	19,312.9
051201111502	1502	West Fork Busseron Creek	11,696.6
051201111503	1503	Headwaters Big Branch	11,601.5
051201111504	1504	Mud Creek-Big Branch	10,844.2
051201111505	1505	Sulfur Creek-Busseron Creek	12,339.0
051201111506	1506	Kettle Creek-Busseron Creek	12,852.4
051201111507	1507	Buttermilk Creek	13,354.4
051201111508	1508	Morrison Creek-Busseron Creek	10,687.5
051201111509	1509	Buck Creek-Busseron Creek	12,959.9
051201111510	1510	Middle Fork Creek	15,808.9
051201111511	1511	Rogers Ditch	11,980.0
051201111512	1512	Tanyard Branch-Busseron Creek	19,884.1
051201111601	1601	Turtle Creek Lake-Turtle Creek	18,099.3
051201111602	1602	Little Turtle Creek-Turtle Creek	13,201.9
051201111603	1603	Buzzard Pond-Wabash River	6,708.3
051201111701	1701	Sweet Creek-Sugar Creek	1,260.0
051201111702	1702	Lower Shaker Prairie Ditch	15,278.6
051201111703	1703	Old Busseron Creek-Wabash River	11,804.3
051201111801	1801	Headwaters Maria Creek	17,494.9
051201111802	1802	Tilley Ditch-Maria Creek	14,189.8
051201111803	1803	Marsh Creek	15,245.8
051201111804	1804	Cotton Branch-Maria Creek	14,861.7
051201111901	1901	Smalls Creek-Wabash River	13,939.1
051201111902	1902	Snapp Creek-Kelso Creek	15,249.9
051201111903	1903	Robeson Pond-Wabash River	3,972.3