

Middle Wabash-Little Vermilion Watershed - 12 Digit HUCs

Middle Wabash-Little Vermilion 8 Digit Watershed (05120108)
 Total Acres: 1,454,684
 Illinois Acres: 133,479
 Indiana Acres: 1,321,205

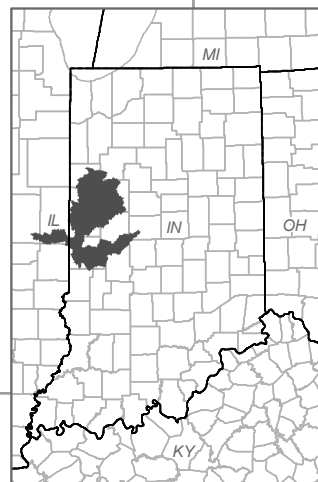
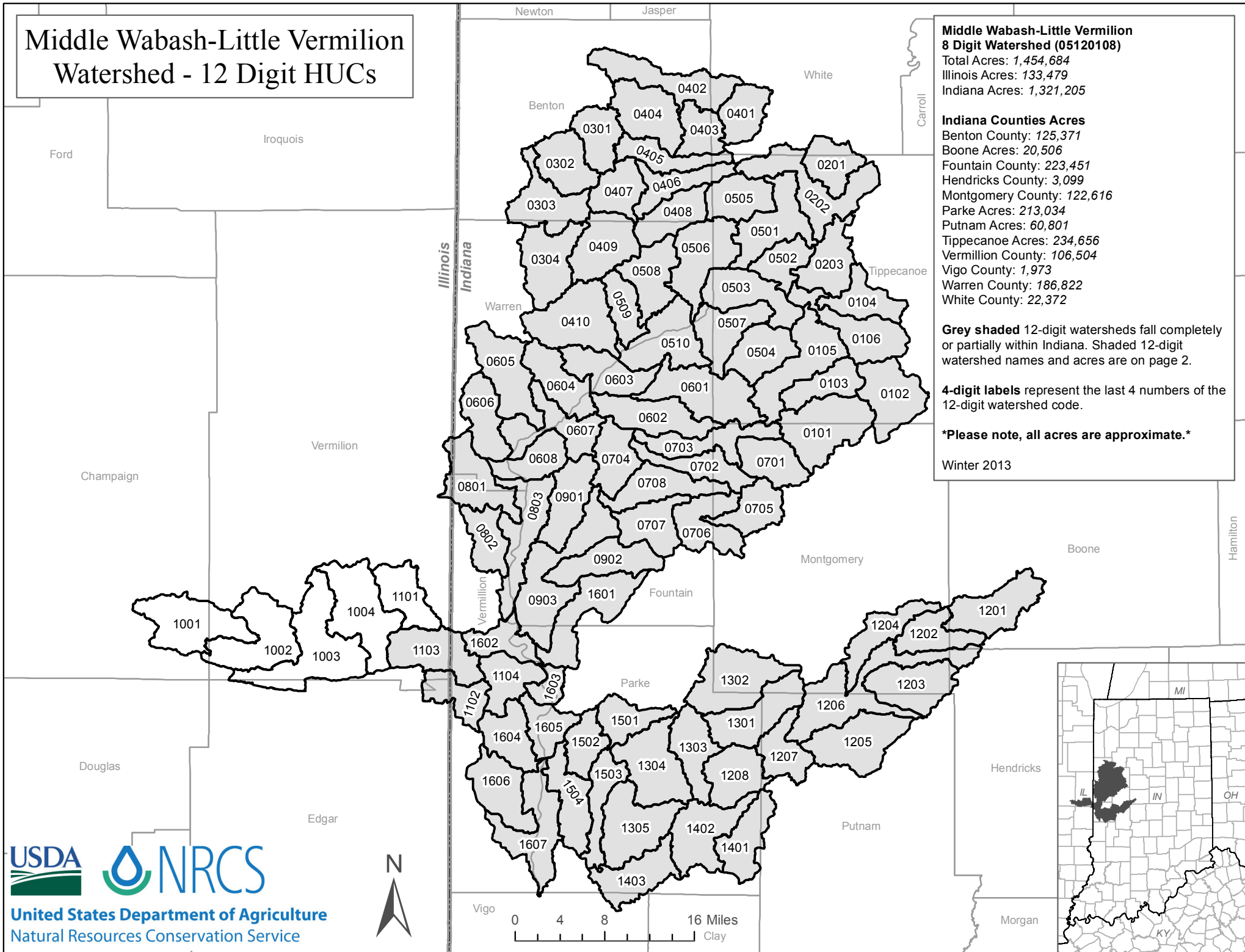
Indiana Counties Acres
 Benton County: 125,371
 Boone Acres: 20,506
 Fountain County: 223,451
 Hendricks County: 3,099
 Montgomery County: 122,616
 Parke Acres: 213,034
 Putnam Acres: 60,801
 Tippecanoe Acres: 234,656
 Vermillion County: 106,504
 Vigo County: 1,973
 Warren County: 186,822
 White County: 22,372

Grey shaded 12-digit watersheds fall completely or partially within Indiana. Shaded 12-digit watershed names and acres are on page 2.

4-digit labels represent the last 4 numbers of the 12-digit watershed code.

Please note, all acres are approximate.

Winter 2013



Number - 12 Digit HUC	Last 4 Digits of HUC	Name - 12 Digit HUC	Acres within Indiana
051201080101	0101	Romney Fraley Ditch	23,367.3
051201080102	0102	East Branch Wea Creek	18,350.7
051201080103	0103	Haywood Ditch-Wea Creek	11,280.0
051201080104	0104	Elliot Ditch	11,887.7
051201080105	0105	Little Wea Creek	21,377.0
051201080106	0106	Kenny Ditch-Wea Creek	18,204.6
051201080201	0201	North Fork Burnett Creek	11,597.5
051201080202	0202	Headwaters Burnett Creek	22,771.5
051201080203	0203	Cedar Hollow-Wabash River	14,685.8
051201080301	0301	Headwaters Mud Pine Creek	12,019.0
051201080302	0302	Seamons Ditch-Mud Pine Creek	14,432.3
051201080303	0303	Goose Creek-Mud Pine Creek	16,866.7
051201080304	0304	Spring Branch-Mud Pine Creek	18,582.1
051201080401	0401	Roudebush Ditch-Big Pine Creek	11,273.0
051201080402	0402	Big Pine Creek Ditch-Big Pine Creek	19,725.4
051201080403	0403	Little Pine Creek	10,057.6
051201080404	0404	Owens Ditch-Big Pine Creek	17,920.6
051201080405	0405	Brumm Ditch-Big Pine Creek	11,030.3
051201080406	0406	Darby Ditch-Big Pine Creek	11,756.1
051201080407	0407	Brown Ditch	11,849.9
051201080408	0408	Harrington Creek-Big Pine Creek	12,872.6
051201080409	0409	Pine Village-Big Pine Creek	17,652.2
051201080410	0410	Hog Back Hill-Big Pine Creek	23,670.8
051201080501	0501	Indian Creek	18,964.4
051201080502	0502	Jordan Creek-Wabash River	10,002.0
051201080503	0503	Lost Creek-Wabash River	16,838.7
051201080504	0504	Flint Run-Flint Creek	13,966.2
051201080505	0505	Otterbein Ditch-Little Pine Creek	13,175.6
051201080506	0506	Armstrong Creek-Little Pine Creek	20,114.6
051201080507	0507	Flint Creek-Wabash River	15,242.9
051201080508	0508	Headwaters Kickapoo Creek	15,253.8
051201080509	0509	West Fork Kickapoo Creek	9,806.4
051201080510	0510	Turkey Run-Wabash River	19,566.5
051201080601	0601	Headwaters Big Shawnee Creek	23,782.9
051201080602	0602	Little Shawnee Creek-Big Shawnee Creek	17,378.2
051201080603	0603	Fall Branch-Wabash River	14,827.0
051201080604	0604	Rock Creek-Wabash River	14,819.5
051201080605	0605	Redwood Creek	20,000.2
051201080606	0606	Opossum Run	13,911.4
051201080607	0607	Raccoon Creek-Wabash River	17,510.7
051201080608	0608	Mallory Branch-Wabash River	11,472.1
051201080701	0701	Joseph Ludlow Ditch-Joseph Ludlow Ditch	13,158.4
051201080702	0702	Turkey Run	11,779.3
051201080703	0703	Charles Ludloe Ditch-North Fork Coal Creek	14,705.4
051201080704	0704	Harrison Lake-Coal Creek	12,875.7
051201080705	0705	Headwaters East Fork Coal Creek	11,814.5
051201080706	0706	Town of Hillsboro-East Fork Coal Creek	15,504.5
051201080707	0707	Rose Cemetary-East Fork Coal Creek	14,038.2
051201080708	0708	Dry Run-Coal Creek	15,411.5
051201080801	0801	Spring Creek	15,846.8
051201080802	0802	Jordan Creek	11,289.0
051201080803	0803	Collette Pond-Wabash River	19,809.4
051201080901	0901	Graham Creek	15,828.4
051201080902	0902	Prairie Creek	15,820.8
051201080903	0903	Cooper Chapel-Coal Creek	28,600.7
051201081102	1102	Jonathon Creek	7,029.9
051201081103	1103	Yankee Branch-Little Vermilion River	5,957.9
051201081104	1104	Town of Newport-Little Vermilion River	12,398.3
051201081201	1201	Headwaters Big Raccoon Creek	17,558.9
051201081202	1202	Town of New Ross-Big Raccoon Creek	12,143.4
051201081203	1203	Haw Creek	17,862.2
051201081204	1204	Cornstalk Creek	12,942.4
051201081205	1205	North Ramp Creek	21,148.9
051201081206	1206	Little Raccoon Creek-Big Raccoon Creek	29,621.0
051201081207	1207	Byrd Branch-Big Raccoon Creek	11,893.1
051201081208	1208	Mansfield Reservoir-Big Raccoon River	14,727.7
051201081301	1301	South Fork Little Raccoon Creek	18,404.0
051201081302	1302	Demeree Creek-Little Raccoon Creek	22,792.9
051201081303	1303	Cumberland Creek-Little Raccoon Creek	14,092.7
051201081304	1304	Leatherwood Branch-Little Raccoon Creek	21,593.5
051201081305	1305	Sunderland Branch-Little Raccoon Creek	21,592.3
051201081401	1401	Rocky Fork Creek	14,337.8
051201081402	1402	Strange Branch-Big Raccoon Creek	18,983.8
051201081403	1403	Cox Ditch #1-Big Raccoon Creek	15,502.1
051201081501	1501	Cat Creek-Leatherwood Creek	10,506.9
051201081502	1502	Rocky Run-Leatherwood Creek	10,034.9
051201081503	1503	Rock Run-Big Raccoon Creek	11,631.9
051201081504	1504	Town of Mecca-Big Raccoon Creek	15,117.2
051201081601	1601	Lake Holiday-Mill Creek	20,317.3
051201081602	1602	Dry Branch-Wabash River	10,359.0
051201081603	1603	Wimsett Cemetary-Wabash River	5,187.1
051201081604	1604	Buck Creek-Little Raccoon Creek	13,297.1
051201081605	1605	Town of Montezuma-Wabash River	10,377.4
051201081606	1606	Norton Creek	16,440.7
051201081607	1607	Feather Creek-Wabash River	21,006.3