

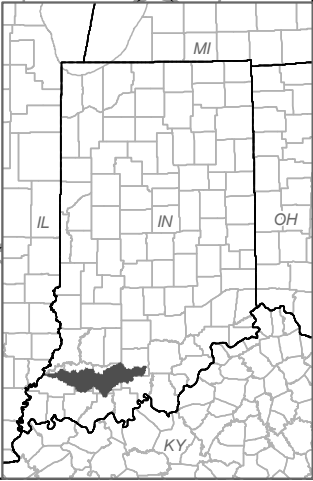
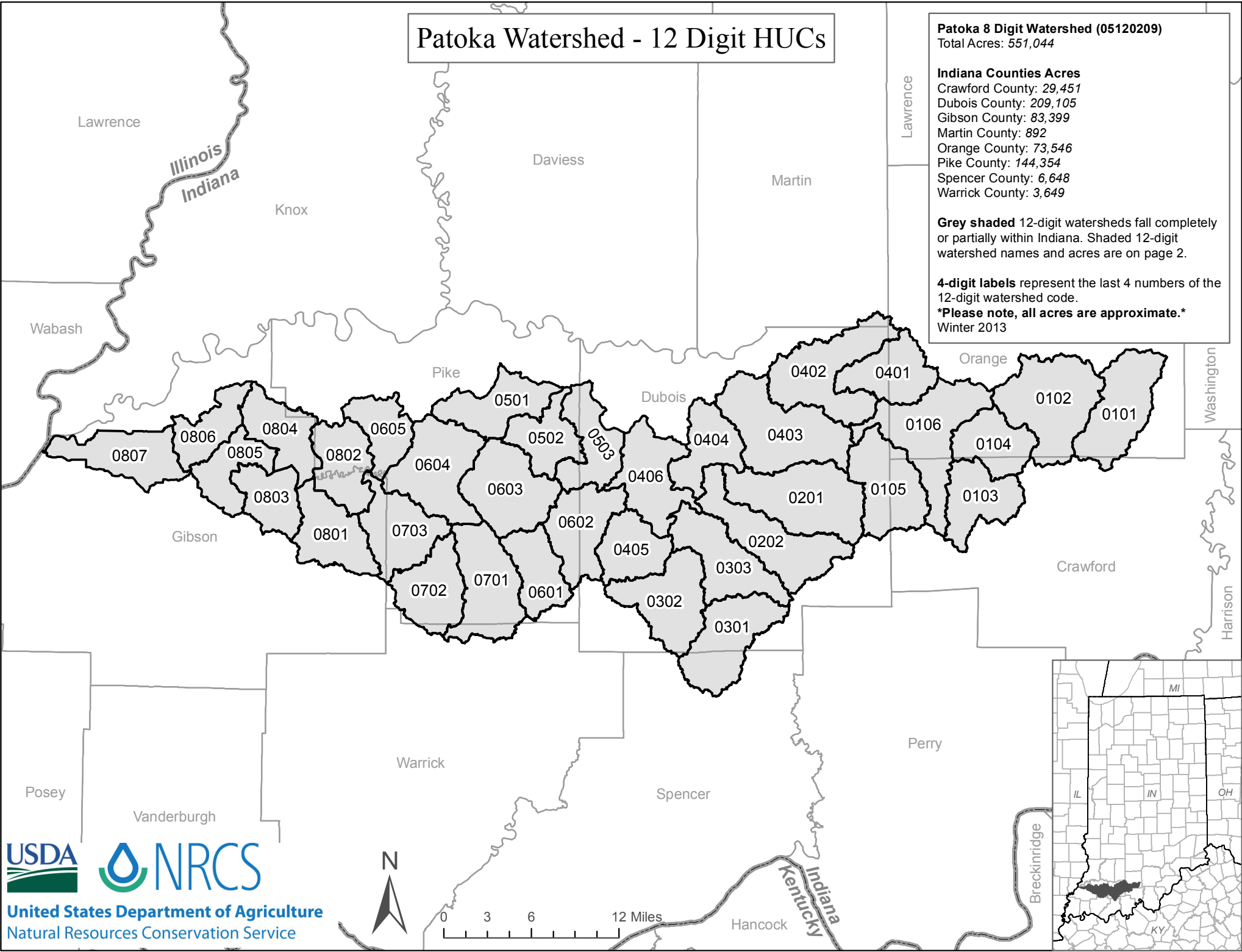
# Patoka Watershed - 12 Digit HUCs

**Patoka 8 Digit Watershed (05120209)**  
 Total Acres: 551,044

**Indiana Counties Acres**  
 Crawford County: 29,451  
 Dubois County: 209,105  
 Gibson County: 83,399  
 Martin County: 892  
 Orange County: 73,546  
 Pike County: 144,354  
 Spencer County: 6,648  
 Warrick County: 3,649

**Grey shaded** 12-digit watersheds fall completely or partially within Indiana. Shaded 12-digit watershed names and acres are on page 2.

**4-digit labels** represent the last 4 numbers of the 12-digit watershed code.  
 \*Please note, all acres are approximate.\*  
 Winter 2013



Number - 12 Digit HUC	Last 4 Digits of HUC	Name - 12 Digit HUC	Acres within Indiana
051202090101	0101	Fudge Creek-Patoka River	17,998.6
051202090102	0102	Youngs Creek-Pakota River	23,341.1
051202090103	0103	Little Patoka River-Pakota Lake	13,210.7
051202090104	0104	Dumpling Branch-Patoka River	11,743.7
051202090105	0105	Lick Fork-Patoka Lake	17,577.2
051202090106	0106	Painter Creek-Potaka River	23,312.9
051202090201	0201	Hall Creek	23,454.5
051202090202	0202	Richland Creek-Flat Creek	19,816.5
051202090301	0301	Green Creek-Hunley Creek	17,766.0
051202090302	0302	Bruner Creek	17,756.3
051202090303	0303	Indian Creek-Hunley Creek	16,921.1
051202090401	0401	Cane Creek-Dillon Creek	13,413.9
051202090402	0402	Davis Creek-Pakota River	21,868.0
051202090403	0403	Long Ditch-Pakota River	24,174.1
051202090404	0404	Calmut Run-Patoka River	11,855.0
051202090405	0405	Ell Creek	11,581.6
051202090406	0406	Crooked Creek-Patoka River	16,234.7
051202090501	0501	Headwaters Flat Creek	13,660.6
051202090502	0502	Bone Creek-Flat Creek	11,034.9
051202090503	0503	Little Flat Creek-Flat Creek	12,957.2
051202090601	0601	Cup Creek	11,348.9
051202090602	0602	Rock Creek-Patoka River	15,410.4
051202090603	0603	Mill Creek-Patoka River	18,879.5
051202090604	0604	Sugar Creek-Patoka River	20,138.0
051202090605	0605	Flat Creek-Patoka River	10,087.5
051202090701	0701	Houchin Ditch-South Fork Pakota River	19,010.4
051202090702	0702	Honey Creek-South Fork Pakota River	14,331.0
051202090703	0703	Wheeler Creek-South Fork Pakota River	15,472.4
051202090801	0801	Keg Creek	14,349.5
051202090802	0802	Robinson Creek-Pakota River	13,240.3
051202090803	0803	Lost Creek	10,635.2
051202090804	0804	Yellow Creek-Pakota River	12,736.1
051202090805	0805	Indian Creek-Pakota River	10,523.4
051202090806	0806	Trippet Ditch-Pakota River	10,147.7
051202090807	0807	Hull Ditch-Pakota River	15,055.5