

Upper East Fork White Watershed - 12 Digit HUCs

Upper East Fork White 8 Digit Watershed
(05120206)

Total Acres: 519,334

Indiana Counties Acres

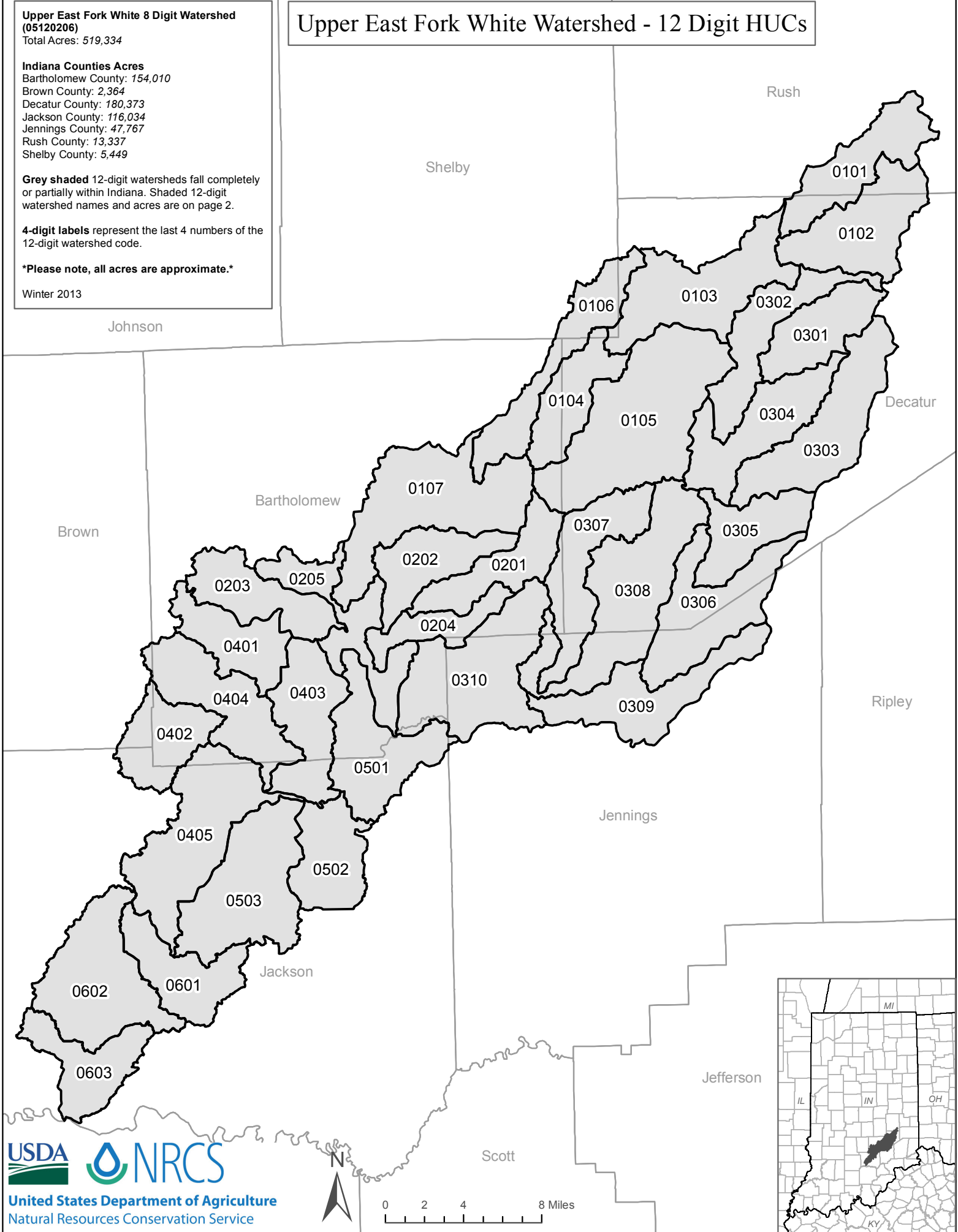
Bartholomew County: 154,010
Brown County: 2,364
Decatur County: 180,373
Jackson County: 116,034
Jennings County: 47,767
Rush County: 13,337
Shelby County: 5,449

Grey shaded 12-digit watersheds fall completely or partially within Indiana. Shaded 12-digit watershed names and acres are on page 2.

4-digit labels represent the last 4 numbers of the 12-digit watershed code.

Please note, all acres are approximate.

Winter 2013



Number - 12 Digit HUC	Last 4 Digits of HUC	Name - 12 Digit HUC	Acres within Indiana
051202060101	0101	North Branch-Clifty Creek	13,314.3
051202060102	0102	Middle Branch-Clifty Creek	16,334.7
051202060103	0103	Pond Branch-Clifty Creek	20,076.9
051202060104	0104	Town of Hartsville-Clifty Creek	10,360.7
051202060105	0105	Fall Fork	32,348.0
051202060106	0106	Duck Creek	13,588.1
051202060107	0107	Otter Creek-Clifty Creek	25,562.1
051202060201	0201	Headwaters Little Sand Creek	10,881.1
051202060202	0202	Brush Creek	11,185.5
051202060203	0203	Denios Creek-East Fork White River	11,812.1
051202060204	0204	Cooks Creek-Little Sand Creek	6,799.8
051202060205	0205	Opossum Creek-East Fork White River	13,529.1
051202060301	0301	Gas Creek-Sand Creek	11,036.2
051202060302	0302	Muddy Fork	12,624.8
051202060303	0303	Cobbs Fork	18,960.5
051202060304	0304	Lost Creek-Sand Creek	15,045.3
051202060305	0305	Panther Creek-Sand Creek	10,841.2
051202060306	0306	Millstone Creek-Sand Creek	17,879.4
051202060307	0307	Bear Creek	14,814.5
051202060308	0308	Wyaloosing Creek	25,555.9
051202060309	0309	Fish Creek-Sand Creek	15,504.8
051202060310	0310	Rock Creek-Sand Creek	23,462.3
051202060401	0401	Grandview Lake-East Fork White Creek	10,665.9
051202060402	0402	South Fork White Creek	10,759.5
051202060403	0403	East Fork White Creek	14,239.6
051202060404	0404	Headwaters White Creek	15,967.4
051202060405	0405	Cooley Creek-White Creek	22,634.3
051202060501	0501	Peters Lake-Thompson Slough	15,974.7
051202060502	0502	Heddy Run-East Fork White River	11,770.7
051202060503	0503	Beatty Walker Ditch-East Fork White River	22,040.6
051202060601	0601	Ball Richard Ditch-East Fork White River	11,919.7
051202060602	0602	Wayman Ditch-East Fork White River	20,830.8
051202060603	0603	Stuckwish Ditch-East Fork White River	11,012.8