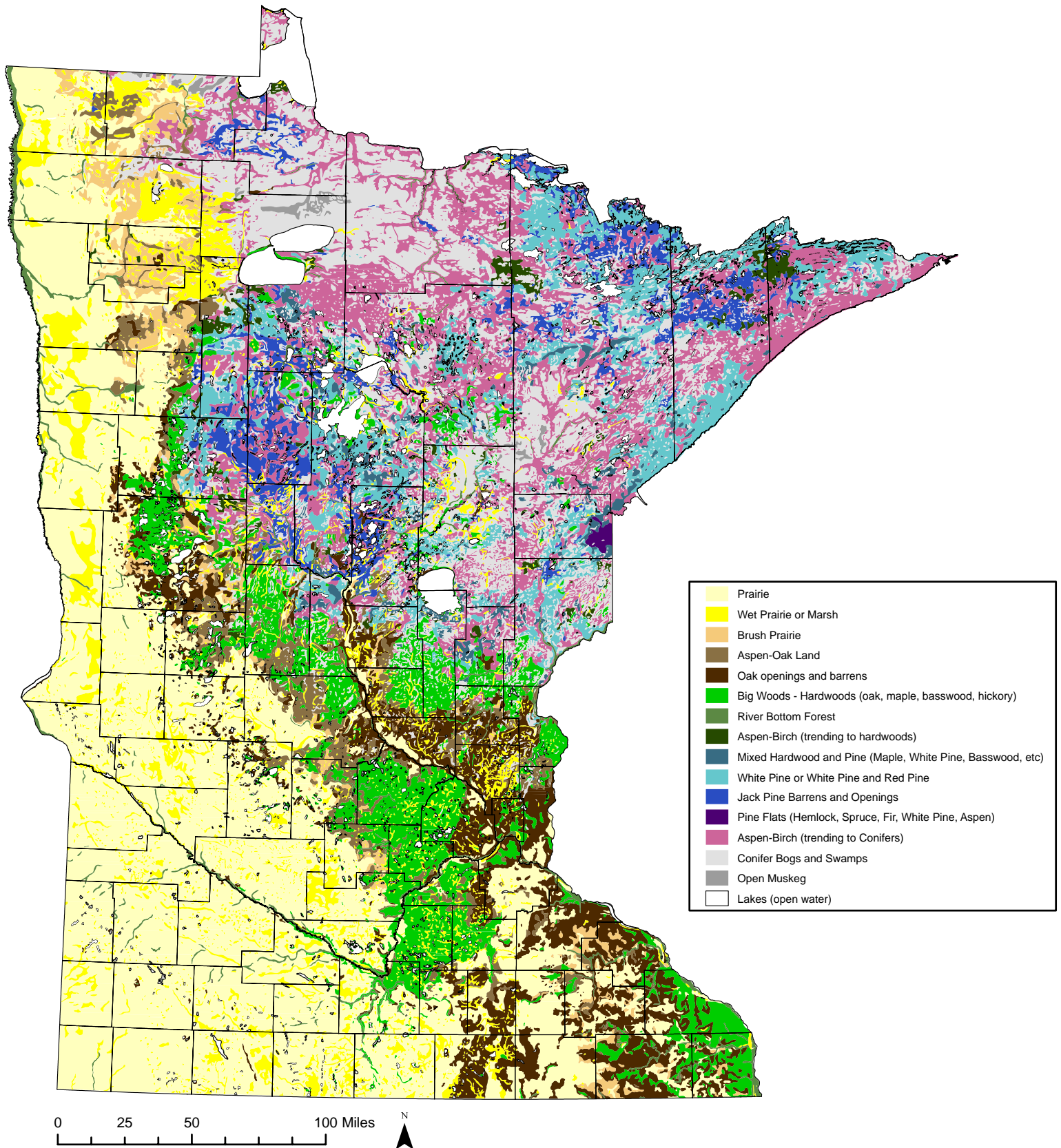


The Natural Vegetation of Minnesota at the Time of the Public Land Survey: 1847-1907



This map was compiled from Minnesota Department of Natural Resources Geographic Information System digitized data, available on the DNR's web site at <http://deli.dnr.state.mn.us/>. The digitized data files were created from the Original Vegetation of Minnesota, a map compiled in 1930 by F.J. Marschner from the U.S. General Land Office Survey Notes and published in 1974 under the direction of M.L. Heinselmann of the U.S. Forest Service by the North Central Forest Experiment Station in St. Paul, Minnesota. Map compiled by DNR Natural Heritage and Nongame Research Program, June, 2005