

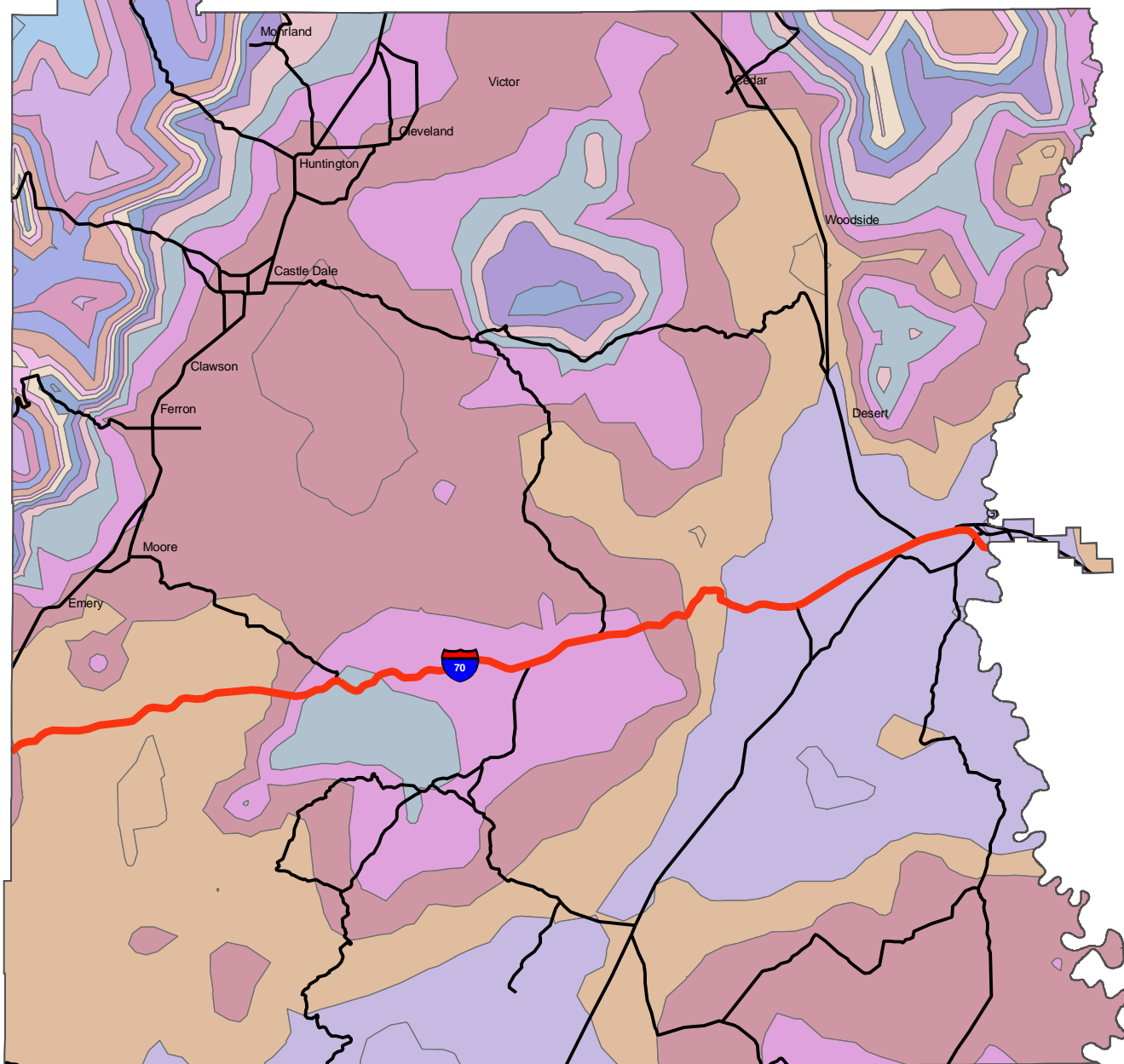
Annual Precipitation Ranges

Emery County, Utah



Precipitation (inches)

- 6-7
- 7-8
- 8-9
- 9-10
- 10-11
- 11-12
- 12-13
- 13-14
- 14-15
- 15-16
- 16-18
- 18-20
- 20-22
- 22-25
- 25-28
- 28-32
- 32-36



0 5 10 20 Miles

Precipitation data: Parameter-elevation Regressions on Independent Slopes Model (PRISM) derived raster data is the underlying data set from which the precipitation range polygons were created. Other layers acquired from the Automated Geographic Reference Center (AGRC), a division of the Department of Technology of the State of Utah.

Defined in original projection and reprojected to UTM NAD83, Zone 12.

pt 11/14/2006



This precipitation data is the average annual precipitation for the climatological period 1961-90 and should be used for RUSLE2 calculations. Shapefile "Area3_precip_RUSLE2" is located in the following folder in each NRCS Area 3 office: **F:\geodata\climate\precipitation** and should be used for overlay of project area in ArcMap for accurate determination of average annual precipitation. Use the Identify tool to click on the precise area for which you need precipitation data.