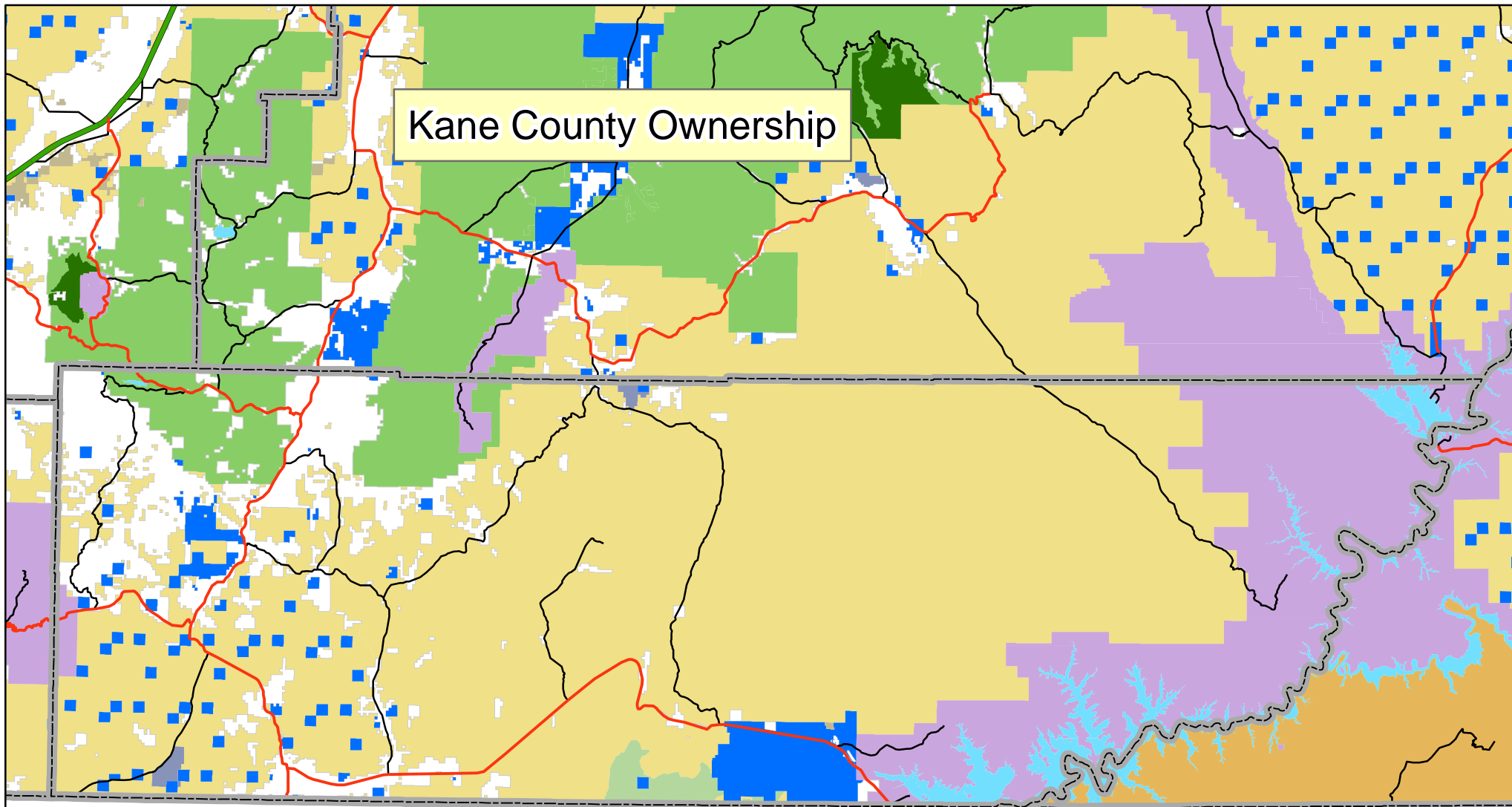


# Kane County Ownership



- State Trust Land
- Bureau of Land Management (BLM)
- US Forest Service (USFS)
- BLM Wilderness Area
- USFS Wilderness Area
- Indian Reservation (IR)
- Military Reservations and Corps of Engineers
- Private Land
- National Park Service (NPS)
- State Parks and Recreation
- State Wildlife Reserve/Management Area
- State Sovereign Land
- Other State Land
- US Fish & Wildlife (USFW) National Wildlife Refuge
- Water
- Intermittent Water

7.5 3.75 0 7.5 Miles

